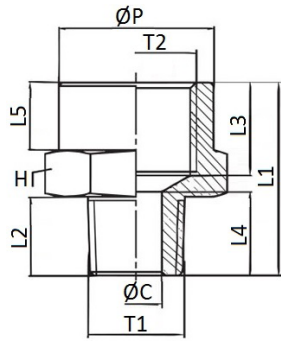


1420

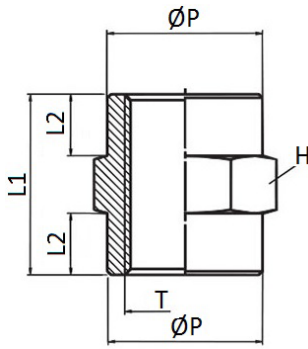
Enlarger M BSPT thread / F BSPP thread



CODE	T1	T2	ØC	ØP	L1	L2	L3	L4	L5	H	GR.
1420TR1814	R1/8"	G1/4"	5	16,5	22	8	11,0	9,1	8,0	17	16,2
1420TR1438	R1/4"	G3/8"	7	21,5	27,0	11	13,0	11,7	9,5	22	33,2
1420TR3812	R3/8"	G1/2"	10	26,5	30,0	11	15,0	12,4	11,5	27	54,6

1425

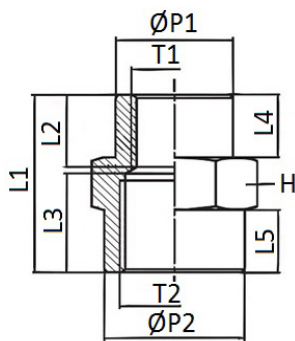
Sleeve F/F BSPP thread



CODE	T	ØP	L1	L2	H	GR.
1425TR18	G1/8"	13,0	15	5,0	14	8,9
1425TR14	G1/4"	16,5	22	7,5	17	17,4
1425TR38	G3/8"	21,5	25	8,5	22	34,4
1425TR12	G1/2"	26,5	32	11,0	27	64,4
1425TR34	G3/4"	31,5	34	12,0	32	79,3

1426

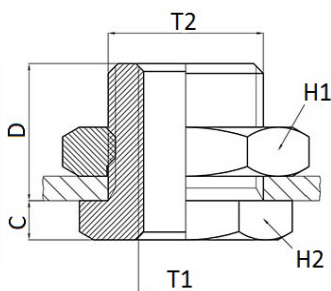
Reduced sleeve F/F BSPP thread



CODE	T1	T2	ØP1	ØP2	L1	L2	L3	L4	L5	H	GR.
1426TR1814	G1/8"	G1/4"	13,5	16,5	23,0	9,1	13	7,0	9,0	17	18,4
1426TR1438	G1/4"	G3/8"	18,0	21,5	27,0	11,0	15	9,5	9,5	22	36,2
1426TR1412	G1/4"	G1/2"	18,0	26,5	30,0	10,8	17	9,5	10,5	27	56,8
1426TR3812	G3/8"	G1/2"	21,5	26,5	30,0	11,8	17	8,0	13,0	27	61,6
1426TR1234	G1/2"	G3/4"	26,5	31,5	36,0	14,6	20	11,0	15,0	32	88,3

1430

Bulkhead Inox AISI 316



CODE	T1	T2	C	D	H1	H2	GR.
1430TR14M2015	1/4	M20X1,5	4	20	27	24	58,0
1430TR12M2815	1/2	M28X1,5	6	27	36	32	125,0

