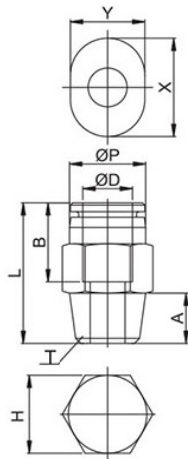


PC-C-R

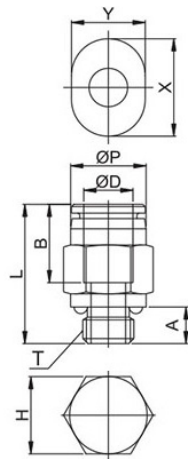
Compact male connector BSPT thread nickel plated



CODE	ØD	ØP	T	L	A	B	H	X	Y	DN	GR.
PC-C04R01	4	8,0	R1/8"	16,7	8,0	11,7	10	10,4	8,2	3,0	6,0
PC-C06R01	6	10,0	R1/8"	18,9	8,0	12,7	10	12,4	10,2	5,0	7,0

PC-C-G

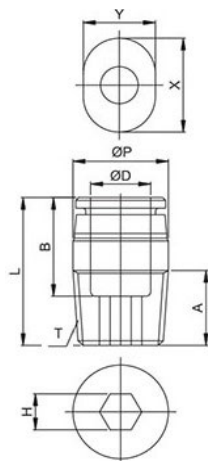
Compact male connector BSPP & metric thread nickel plated



CODE	ØD	ØP	T	L	A	B	H	X	Y	DN	GR.
PC-C03M3	3	7,0	M3X0,5P	16,1	3,0	11,2	7	9,2	7,2	1,5	3,0
PC-C03M5	3	7,2	M5X0,8P	16,3	3,6	11,2	8	9,2	7,2	2,0	4,0
PC-C03M6	3	7,2	M6X1,0P	16,3	4,1	11,2	8	9,2	7,2	2,0	4,0
PC-C04M3	4	8,0	M3X0,5P	16,8	3,0	11,7	8	10,4	8,2	1,5	4,0
PC-C04M5	4	8,0	M5X0,8P	17,1	3,6	11,7	8	10,4	8,2	2,5	4,0
PC-C04M6	4	8,0	M6X1,0P	17,7	4,1	11,7	8	10,4	8,2	3,0	4,0
PC-C04G01	4	8,3	G1/8"	17,4	5,0	11,7	12	10,4	8,2	3,0	8,0
PC-C06M5	6	10,0	M5X0,8P	18,6	3,6	12,7	10	12,4	10,2	2,5	5,0
PC-C06M6	6	10,0	M6X1,0P	18,9	4,1	12,7	10	12,4	10,2	3,0	6,0
PC-C06G01	6	10,3	G1/8"	17,9	5,0	12,7	12	12,4	10,2	5,0	9,0

POC-C-R

Compact male connector internal hexagon BSPT thread nickel plated



CODE	ØD	ØP	T	L	A	B	H	X	Y	DN	GR.
POC-C04R01	4	10	R1/8"	15,7	8,0	11,7	3	10,4	8,2	3,0	5,0
POC-C06R01	6	10	R1/8"	18,9	8,0	12,7	4	12,4	10,2	4,0	6,0

