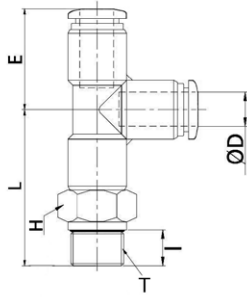


**WTRST-G**

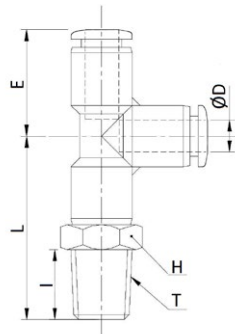
Swivel male lateral tee BSPP & metric thread nickel plated



CODE	ØD	T	I	L	E	H	GR.
WTRST04M5	4	M5X0,8	3,8	22,3	18,5	10	10,6
WTRST04M6	4	M6X1	4,5	23,0	18,5	10	10,8
WTRST04G01	4	G1/8"	5,0	25,0	18,5	14	14,2
WTRST04G02	4	G1/4"	5,8	26,3	18,5	17	20,3
WTRST06M5	6	M5X0,8	3,8	23,3	19,3	12	13,9
WTRST06M6	6	M6X1	4,5	24,0	19,3	12	14,6
WTRST06G01	6	G1/8"	5,0	25,5	19,3	14	17,2
WTRST06G02	6	G1/4"	5,8	26,8	19,3	17	20,5
WTRST06G03	6	G3/8"	6,8	28,3	19,3	20	27,0
WTRST06G04	6	G1/2"	8,0	29,5	19,3	24	41,0
WTRST08G01	8	G1/8"	5,0	28,45	22,75	14	20,8
WTRST08G02	8	G1/4"	5,8	29,75	22,75	17	23,8
WTRST08G03	8	G3/8"	6,8	31,25	22,75	20	29,9
WTRST08G04	8	G1/2"	8,0	32,45	22,75	24	40,1
WTRST10G01	10	G1/8"	5,0	34,0	27,0	17	38,4
WTRST10G02	10	G1/4"	5,8	34,8	27,0	17	37,7
WTRST10G03	10	G3/8"	6,8	36,3	27,0	20	41,8
WTRST10G04	10	G1/2"	8,0	38,5	27,0	24	54,5
WTRST12G02	12	G1/4"	5,8	36,8	29,6	21	52,4
WTRST12R03	12	G3/8"	6,8	37,8	29,6	21	53,0
WTRST12G04	12	G1/2"	8,0	39,5	29,6	24	60,3

**WTRST-N**

Swivel lateral male tee NPT & UNF nickel plated



CODE	ØD	T	I	L	E	H	LB
WTRST532UF1032	5/32	UNF 10-32	0,149	0,905	0,728	0,437	0,022
WTRST532N01	5/32	N1/8"	0,295	0,984	0,728	0,437	0,023
WTRST532N02	5/32	N1/4"	0,413	1,141	0,728	0,562	0,036
WTRST316UF1032	3/16	UNF 10-32	0,149	0,905	0,740	0,437	0,029
WTRST316N01	3/16	N1/8"	0,295	1,003	0,740	0,437	0,031
WTRST316N02	3/16	N1/4"	0,413	1,141	0,740	0,562	0,040
WTRST316N03	3/16	N3/8"	0,433	1,181	0,740	0,685	0,052
WTRST1-4UF1032	1/4	UNF 10-32	0,149	0,972	0,759	0,5	0,031
WTRST1-4N01	1/4	N1/8"	0,295	1,023	0,759	0,5	0,032
WTRST1-4N02	1/4	N1/4"	0,413	1,161	0,759	0,562	0,042
WTRST1-4N03	1/4	N3/8"	0,433	1,200	0,759	0,685	0,055
WTRST516N01	5/16	N1/8"	0,295	1,159	0,895	0,562	0,046
WTRST516N02	5/16	N1/4"	0,413	1,277	0,895	0,562	0,046
WTRST516N03	5/16	N3/8"	0,433	1,316	0,895	0,685	0,063
WTRST38N01	3/8	N1/8"	0,295	1,377	1,062	0,685	0,083
WTRST38N02	3/8	N1/4"	0,413	1,496	1,062	0,685	0,085
WTRST38N03	3/8	N3/8"	0,433	1,515	1,062	0,685	0,083
WTRST38N04	3/8	N1/2"	0,551	1,653	1,062	0,874	0,120
WTRST1-2N02	1/2	N1/4"	0,413	1,555	1,165	0,874	0,116
WTRST1-2N03	1/2	N3/8"	0,433	1,574	1,165	0,874	0,121
WTRST1-2N04	1/2	N1/2"	0,551	1,692	1,165	0,874	0,131

