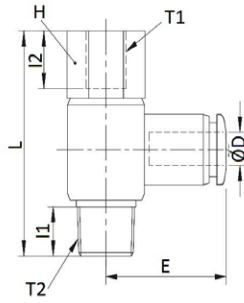


WTRHF-N

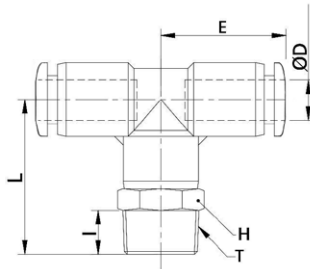
Swivel female banjo elbow NPT & UNF thread nickel plated



CODE	ØD	T1	T2	I1	I2	H	B	E	LB
WTRHF532UF1032	5/32	UNF 10-32	UNF 10-32	0,149	0,216	0,437	0,767	0,787	0,034
WTRHF532N01	5/32	N1/8"	N1/8"	0,295	0,295	0,562	1,181	0,877	0,036
WTRHF316UF1032	3/16	UNF 10-32	UNF 10-32	0,149	0,216	0,437	0,767	0,799	0,035
WTRHF316N01	3/16	N1/8"	N1/8"	0,295	0,295	0,562	1,181	0,889	0,037
WTRHF316N02	3/16	N1/4"	N1/4"	0,413	0,413	0,685	1,409	0,956	0,061
WTRHF1-4N01	1/4	N1/8"	N1/8"	0,295	0,295	0,562	1,181	0,909	0,037
WTRHF1-4N02	1/4	N1/4"	N1/4"	0,413	0,413	0,685	1,409	0,988	0,061
WTRHF516N01	5/16	N1/8"	N1/8"	0,295	0,295	0,562	1,181	1,007	0,039
WTRHF516N02	5/16	N1/4"	N1/4"	0,413	0,413	0,685	1,409	1,125	0,063
WTRHF516N03	5/16	N3/8"	N3/8"	0,433	0,433	0,874	1,610	1,165	0,100
WTRHF38N02	3/8	N1/4"	N1/4"	0,413	0,413	0,685	1,409	1,220	0,070
WTRHF38N03	3/8	N3/8"	N3/8"	0,433	0,433	0,874	1,610	1,244	0,107
WTRHF1-2N03	1/2	N3/8"	N3/8"	0,433	0,433	0,874	1,610	1,401	0,111
WTRHF1-2N04	1/2	N1/2"	N1/2"	0,551	0,551	1	1,929	1,440	0,170

WTRT-R

Swivel male central tee BSPT thread nickel plated



CODE	ØD	T	I	L	E	H	GR.
WTRT04R01	4	R1/8"	7,0	24,5	18,5	10	10,5
WTRT04R02	4	R1/4"	9,5	28,0	18,5	14	16,3
WTRT06R01	6	R1/8"	7,0	25,5	19,3	12	14,1
WTRT06R02	6	R1/4"	9,5	28,5	19,3	14	19,1
WTRT06R03	6	R3/8"	10,5	30,0	19,3	17	25,2
WTRT06R04	6	R1/2"	13,5	33,5	19,3	21	38,5
WTRT08R01	8	R1/8"	7,0	29,0	22,75	14	20,9
WTRT08R02	8	R1/4"	9,5	31,45	22,75	14	21,0
WTRT08R03	8	R3/8"	10,5	32,95	22,75	17	28,6
WTRT08R04	8	R1/2"	13,5	36,45	22,75	21	41,5
WTRT10R01	10	R1/8"	7,0	34,5	27,0	17	37,9
WTRT10R02	10	R1/4"	9,5	37,0	27,0	17	38,6
WTRT10R03	10	R3/8"	10,5	38,0	27,0	17	38,0
WTRT10R04	10	R1/2"	13,5	41,5	27,0	21	54,5
WTRT12R02	12	R1/4"	9,5	38,5	29,6	20	52,8
WTRT12R03	12	R3/8"	10,5	39,5	29,6	20	55,2
WTRT12R04	12	R1/2"	13,5	42,5	29,6	21	59,7
WTRT16R03	16	R3/8"	10,5	43,0	33,0	24	81,0
WTRT16R04	16	R1/2"	13,5	46,0	33,0	24	85,5

