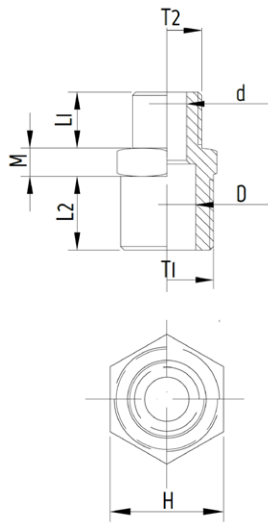


1412MF

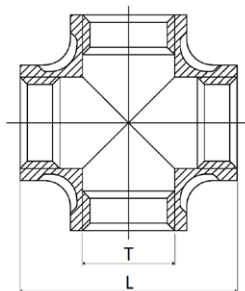
Reduced nipple connector



CODE	T1	T2	L1	L2	M	d	D	H
1412MF1418	R1/4"	R1/8"	8,0	10,5	4,0	5,5	8,0	14,5
1412MF3818	R3/8"	R1/8"	8,0	11,0	5,0	5,5	11,5	18,0
1412MF3814	R3/8"	R1/4"	10,5	11,0	5,0	8,0	11,5	18,0
1412MF1214	R1/2"	R1/4"	10,5	14,5	5,0	8,0	15,0	22,0
1412MF1238	R1/2"	R3/8"	11,0	14,5	5,0	11,5	15,0	22,0
1412MF3438	R3/4"	R3/8"	11,0	15,5	5,5	11,5	20,5	28,0
1412MF3412	R3/4"	R1/2"	14,5	15,5	5,5	15,0	20,5	28,0
1412MF138	1"	R3/8"	11,0	18,0	6,0	11,5	26,0	35,0
1412MF112	1"	R1/2"	14,5	18,0	6,0	15,0	26,0	35,0
1412MF134	1"	R3/4"	15,5	18,0	6,0	20,5	26,0	35,0
1412MF11434	1-1/4"	R3/4"	15,5	20,5	6,5	20,5	34,5	43,5
1412MF1141	1-1/4"	1"	18,0	20,5	6,5	26,0	34,5	43,5
1412MF1121	1-1/2"	1"	18,0	20,5	6,5	26,0	40,0	49,0
1412MF112114	1-1/2"	1-1/4"	20,5	20,5	6,5	34,5	40,0	49,0
1412MF21	2"	1"	18,0	25,0	7,0	26,0	51,0	61,5
1412MF2114	2"	1-1/4"	20,5	25,0	7,0	34,5	51,0	61,5
1412MF2112	2"	1-1/2"	20,5	25,0	7,0	40,0	51,0	61,5

1416MF

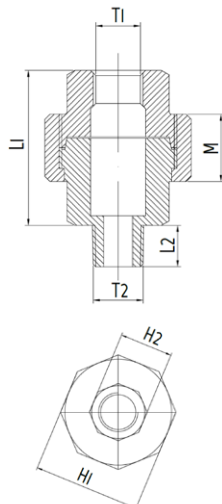
Female cross



CODE	T	L	DN
1416MF18	G1/8"	34,0	6
1416MF14	G1/4"	38,0	8
1416MF38	G3/8"	45,0	10
1416MF12	G1/2"	51,0	15
1416MF34	G3/4"	62,0	20
1416MF1	G1"	72,0	25
1416MF114	G1-1/4"	86,0	32
1416MF112	G1-1/2"	95,0	40
1416MF2	G2"	110,0	50
1416MF212	G2-1/2"	132,0	65

1420-P3

Nipple M/F in 3 pieces



CODE	T1	T2	L1	L2	M	H1	H2
1420MF18P3	G1/8"	R1/8"	30,0	8,0	13,0	26	13
1420MF14P3	G1/4"	R1/4"	33,5	10,5	13,5	29	16,5
1420MF38P3	G3/8"	R3/8"	36,5	11,0	15,0	34	20
1420MF12P3	G1/2"	R1/2"	39,5	14,5	16,0	37	24,5

