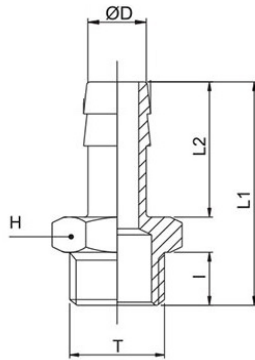


1165

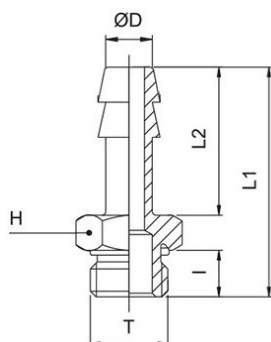
Male barb connector BSPP & metric thread



CODE	T	ØD	I	L1	L2	H	GR.
1165TRM545	M5	4,5	4,0	22,5	15,0	8	6,0
1165TRM56	M5	6	4,0	22,0	19,0	8	3,0
1165TRM66	M6	6	4,0	22,0	19,0	8	4,0
1165TR186	G1/8"	6	6,0	29,5	19,0	12	8,0
1165TR146	G1/4"	6	8,0	32,0	19,0	14	12,0
1165TRM57	M5	7	4,0	22,2	19,0	8	3,0
1165TRM67	M6	7	5,0	22,0	19,0	8	4,0
1165TR187	G1/8"	7	6,0	29,5	19,0	12	8,0
1165TR147	G1/4"	7	8,0	32,0	19,0	14	14,0
1165TR188	G1/8"	8	6,0	29,5	19,0	12	8,0
1165TR148	G1/4"	8	8,0	32,0	19,0	14	14,0
1165TR388	G3/8"	8	9,0	33,0	19,0	19	22,0
1165TR189	G1/8"	9	6,0	29,5	19,0	12	10,0
1165TR149	G1/4"	9	8,0	32,0	19,0	14	14,0
1165TR389	G3/8"	9	9,0	33,0	19,0	19	22,0
1165TR1810	G1/8"	10	6,0	30,5	20,0	12	10,0
1165TR1410	G1/4"	10	8,0	33,0	20,0	14	14,0
1165TR3810	G3/8"	10	9,0	34,0	20,0	19	23,0
1165TR1412	G1/4"	12	8,0	33,0	20,0	14	16,0
1165TR3812	G3/8"	12	9,0	34,0	20,0	19	24,0
1165TR1212	G1/2"	12	10,0	35,5	20,0	22	32,0
1165TR3814	G3/8"	14	9,0	36,0	22,0	19	26,0
1165TR1214	G1/2"	14	10,0	37,5	22,0	22	34,0
1165TR3817	G3/8"	17	9,0	38,0	24,0	19	30,0
1165TR1217	G1/2"	17	10,0	39,5	24,0	22	38,0
1165TR3418	G3/4"	18	11,0	41,5	24,0	30	58,0
1165TR1220	G1/2"	20	10,0	39,5	24,0	22	40,0
1165TR3420	G3/4"	20	11,0	41,5	24,0	30	60,0

1167

Male barb connector BSPP & metric thread with OR



CODE	T	ØD	I	L1	L2	H	GR.
1167TRM545	M5	4,5	4,5	23,0	15,0	8	6,0
1167TR186	G1/8"	6	6,5	30,0	19,0	14	10,0
1167TR146	G1/4"	6	8,0	32,0	19,0	17	16,0
1167TR187	G1/8"	7	6,5	30,0	19,0	14	10,0
1167TR147	G1/4"	7	8,0	32,0	19,0	17	16,0
1167TR188	G1/8"	8	6,5	30,0	19,0	14	12,0
1167TR148	G1/4"	8	8,0	32,0	19,0	17	17,0
1167TR189	G1/8"	9	6,5	30,0	19,0	14	14,0
1167TR149	G1/4"	9	8,0	32,0	19,0	17	16,0
1167TR389	G3/8"	9	9,0	33,0	19,0	20	22,0
1167TR1412	G1/4"	12	8,0	33,0	20,0	17	18,0
1167TR3812	G3/8"	12	9,0	34,0	20,0	20	24,0
1167TR1212	G1/2"	12	10,0	35,5	20,0	24	35,0
1167TR3817	G3/8"	17	9,0	38,0	24,0	20	30,0
1167TR1217	G1/2"	17	10,0	39,5	24,0	24	42,0

