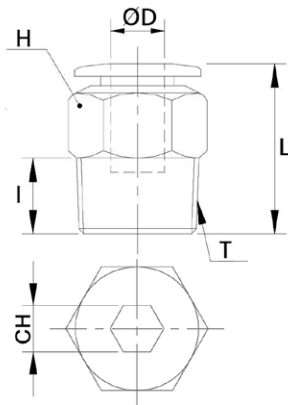


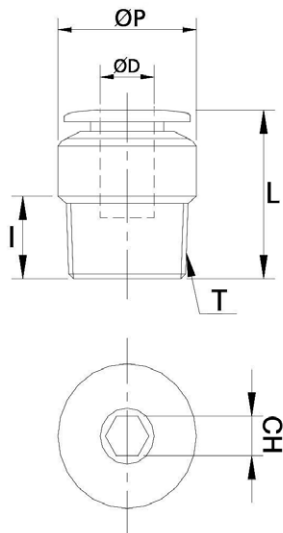
WTRC-N



Male connector with internal hexagon NPT & UNF thread nickel plated

CODE	ØD	T	I	L	CH	H	LB
WTRC532UF1032	5/32	UNF 10-32	0,149	0,799	0,093	0,437	0,012
WTRC532N01	5/32	N1/8"	0,295	0,779	0,093	0,437	0,013
WTRC532N02	5/32	N1/4"	0,413	0,744	0,093	0,562	0,021
WTRC316UF1032	3/16	UNF 10-32	0,149	0,822	0,093	0,437	0,014
WTRC316N01	3/16	N1/8"	0,295	0,811	0,156	0,437	0,027
WTRC316N02	3/16	N1/4"	0,413	0,933	0,156	0,562	0,041
WTRC316N03	3/16	N3/8"	0,433	0,834	0,156	0,578	0,083
WTRC1-4UF1032	1/4	UNF 10-32	0,149	0,834	0,093	0,5	0,015
WTRC1-4N01	1/4	N1/8"	0,295	0,822	0,156	0,5	0,029
WTRC1-4N02	1/4	N1/4"	0,413	0,933	0,156	0,562	0,043
WTRC1-4N03	1/4	N3/8"	0,433	0,834	0,156	0,685	0,087
WTRC516N01	5/16	N1/8"	0,295	1,019	0,187	0,562	0,022
WTRC516N02	5/16	N1/4"	0,143	1,019	0,218	0,562	0,026
WTRC516N03	5/16	N3/8"	0,433	0,881	0,218	0,685	0,038
WTRC38N01	3/8	N1/8"	0,295	1,110	0,187	0,685	0,036
WTRC38N02	3/8	N1/4"	0,413	1,200	0,218	0,685	0,041
WTRC38N03	3/8	N3/8"	0,433	1,011	0,312	0,685	0,045
WTRC38N04	3/8	N1/2"	0,551	1,015	0,312	0,874	0,076
WTRC1-2N02	1/2	N1/4"	0,413	1,334	0,250	0,874	0,054
WTRC1-2N03	1/2	N3/8"	0,433	1,196	0,312	0,874	0,055
WTRC1-2N04	1/2	N1/2"	0,551	1,314	0,312	0,874	0,090

WTROC-R



Male connector with internal hexagon BSPT thread nickel plated

CODE	ØD	T	I	L	ØP	CH	H	GR.
WTROC04R01	4	R1/8"	7,0	19,3	10	3,0	3,0	5,6
WTROC04R02	4	R1/4"	9,5	17,9	14	3,0	3,0	11,2
WTROC06R01	6	R1/8"	7,0	20,4	12	4,0	4,0	6,3
WTROC06R02	6	R1/4"	9,5	22,7	14	4,0	4,0	12,5
WTROC06R03	6	R3/8"	10,5	20,7	17	4,0	4,0	19,0
WTROC08R01	8	R1/8"	7,0	25,4	14	5,0	5,0	10,2
WTROC08R02	8	R1/4"	9,5	24,9	14	6,0	6,0	13,1
WTROC08R03	8	R3/8"	10,5	21,9	17	6,0	6,0	17,3
WTROC08R04	8	R1/2"	13,5	25,9	21	6,0	6,0	37,9
WTROC10R01	10	R1/8"	7,0	27,7	17	5,0	5,0	20,8
WTROC10R02	10	R1/4"	9,5	29,5	17	6,0	6,0	22,5
WTROC10R03	10	R3/8"	10,5	27,0	17	8,0	8,0	22,6
WTROC10R04	10	R1/2"	13,5	25,3	21	8,0	8,0	34,0
WTROC12R02	12	R1/4"	9,5	32,9	20	6,0	6,0	21,5
WTROC12R03	12	R3/8"	10,5	29,9	20	8,0	8,0	22,2
WTROC12R04	12	R1/2"	13,5	32,9	21	8,0	8,0	37,3

