

2/2 WAY PILOT OPERATED SOLENOID VALVE, G 1/4" ÷ G 1/2"

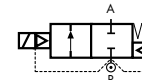
COMMON FEATURES

- Media: water, oil, air
- Ambient temperature: -10°C ÷ +50°C
- Body material: brass (CW617N EN 12165)
- Operator material: stainless steel
- Protection class: IP 65 (with connector and gasket)

OPTIONS

- EPDM seal, temperature max. 120°C (e.g. code D266DEU)
- NPT connection on request, minimum batch may be required (e.g. code D264DBUN)

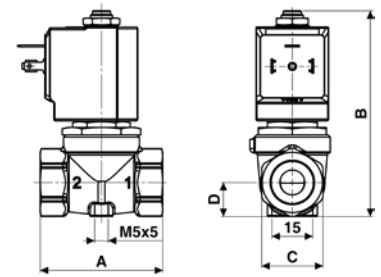
TYPE: D264/265/266



Normally Closed



DIMENSIONS & WEIGHTS		D264	D265	D266
G connection	[ISO 228]	1/4"	3/8"	1/2"
A	[mm]	54	54	54
B	[mm]	89	89	89
C	[mm]	HEX 27	HEX 27	HEX 27
D	[mm]	15	15	15
weight	[kg]	0.45	0.4	0.4



Flow direction overseat 1 → 2

VALVE	nominal Ø	flow rate Kvs	min.	OPD		COILS	
				max. AC	max. DC	code	[Volts/Hz]
code	[mm]	[l/min]	[barg]	[barg]	[barg]	code	[Volts/Hz]
D264DBU	10.5	21	0	16	7	7250	24v DC
D265DBU	10.5	24	0	16	7	7200	24v 50/60Hz
D266DBU	10.5	25	0	16	7	7400	110v 50Hz - 120v 60Hz
						7600	200v 50Hz - 220v 60Hz
						7700	230v 50Hz - 240v 60Hz

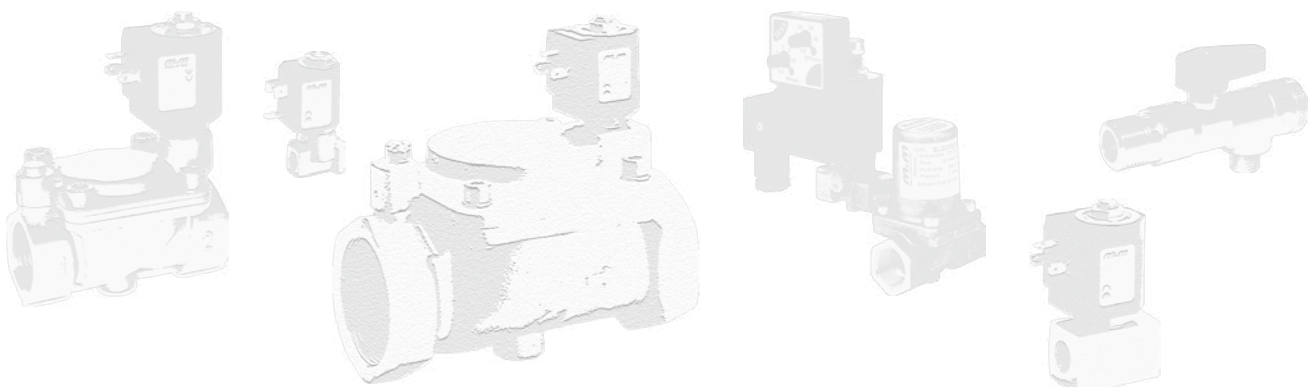
D264/265/266 - NBR seal, NC -

- Media temperature: -10°C ÷ +90°C
- Operator seal and diaphragm material: NBR
- Coil power: AC 18vA (holding)
AC 36vA (inrush)
DC 14w

VALVE	nominal Ø	flow rate Kvs	min.	OPD		COILS	
				max. AC	max. DC	code	[Volts/Hz]
code	[mm]	[l/min]	[barg]	[barg]	[barg]	code	[Volts/Hz]
D264DVU	10.5	21	0	16	7	7250	24v DC
D265DVU	10.5	24	0	16	7	7200	24v 50/60Hz
D266DVU	10.5	25	0	16	7	7400	110v 50Hz - 120v 60Hz
						7600	200v 50Hz - 220v 60Hz
						7700	230v 50Hz - 240v 60Hz

D264/265/266 - FKM seal, NC -

- Media temperature: -10°C ÷ +130°C
- Operator seal and diaphragm material: FKM
- Coil power: AC 18vA (holding)
AC 36vA (inrush)
DC 14w



COMPRESSED AIR

GENERAL PURPOSE