

## 2/2 WAY PILOT OPERATED VALVE WITH ASSISTED LIFT, G 1/4" ÷ G 1/2"

### COMMON FEATURES

Media: water, oil, air

Media temperature: -10°C ÷ +130°C

Ambient temperature: -10°C ÷ +50°C

Body material: brass (CW617N EN 12165)

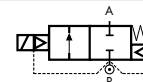
Operator material: stainless steel

Operator seal material: FKM

Main seal and diaphragm material: FKM

Protection class: IP 65 (with connector and gasket)

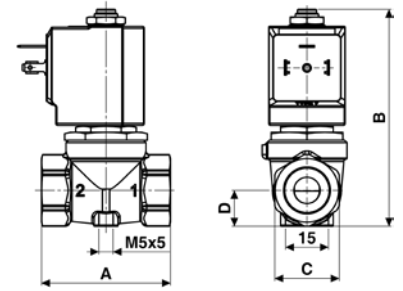
TYPE: D884/885/886



Normally Closed



DIMENSIONS & WEIGHTS		D884	D885	D886
<b>G connection</b>	[ISO 228]	1/4"	3/8"	1/2"
<b>A</b>	[mm]	54	54	54
<b>B</b>	[mm]	89	89	89
<b>C</b>	[mm]	HEX 27	HEX 27	HEX 27
<b>D</b>	[mm]	15	15	15
<b>weight</b>	[kg]	0.45	0.4	0.4



Flow direction overseat 1 → 2

VALVE	nominal Ø	flow rate Kvs	OPD			COILS	
			min.	max. AC	max. DC	code	[Volts/Hz]
code	[mm]	[l/min]	[barg]	[barg]	[barg]	code	[Volts/Hz]
<b>D884DVU</b>	10.5	21	0	16	6	7250	24v DC
<b>D885DVU</b>	10.5	24	0	16	6	7200	24v 50/60Hz
<b>D886DVU</b>	10.5	25	0	16	6	7400	110v 50Hz - 120v 60Hz
						7600	200v 50Hz - 220v 60Hz
						7700	230v 50Hz - 240v 60Hz

D884/885/886 - FKM seal, NC -

Coil power: AC 18vA (holding)  
AC 36vA (inrush)  
DC 14w

GENERAL PURPOSE

