

## 3/2 WAY DIRECT ACTING SOLENOID VALVE, G 1/8"

### COMMON FEATURES

Media<sup>Ⓢ</sup>: water, oil, air

Media temperature: -10°C → +130°C

Ambient temperature: -10°C → +50°C

Body material: brass (CW719R EN 12165) low lead content

Orifice material: stainless steel (1.4305 EN 10088/AISI 303)

Operator material: stainless steel

Seal material: foodgrade FKM

Protection class: IP 65 (with connector and gasket)

### OPTIONS

EPDM seal, temperature max. 120°C (e.g. code RB397CEC)

Electroless nickel plating treatment (e.g. code B397CVCK)

### NOTES

① Valve suitable for contact with food media as per the EEC Directives and Regulations. For more specific information, please contact M&M Sales Department.

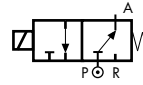
DIMENSIONS & WEIGHTS		B397	RB397	SB397
<b>G connection</b>	[ISO 228]	1/8"	1/8"	1/8"
<b>A</b>	[mm]	30	30	30
<b>B</b>	[mm]	67.8	72.5	67.8
<b>C</b>	[mm]	18	18	18
<b>D</b>	[mm]	7	7	7
<b>weight</b>	[kg]	0.15	0.16	0.15

VALVE	nominal Ø	flow rate Kvs	OPD			COILS	
			min.	max. AC	max. DC	code	[Volts/Hz]
code	[mm]	[l/min]	[barg]	[barg]	[barg]	code	[Volts/Hz]
<b>B397CVA</b>	1.0	0.5	0	18	18	2250	24v DC
<b>B397CVB</b>	1.2	0.7	0	15	15	2200	24v 50/60Hz
<b>B397CVC</b>	1.5	1.0	0	10	10	2400	110v 50Hz - 120v 60Hz
<b>B397CVE</b>	2.0	1.9	0	5	5	2600	200v 50Hz - 220v 60Hz
<b>B397CVH</b>	3.0	3.5	0	2	2	2700	230v 50Hz - 240v 60Hz

VALVE	nominal Ø		flow rate Kvs	OPD			COILS	
	1 → 2	1 → 3		min.	max. AC	max. DC	code	[Volts/Hz]
code	[mm]	[mm]	[l/min]	[barg]	[barg]	[barg]	code	[Volts/Hz]
<b>SB397CVB</b>	1.2	1.7	0.7	0	6	3	2250	24v DC
<b>SB397CVC</b>	1.5	1.7	1.0	0	4.5	2	2200	24v 50/60Hz
							2400	110v 50Hz - 120v 60Hz
							2600	200v 50Hz - 220v 60Hz
							2700	230v 50Hz - 240v 60Hz

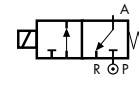
VALVE	nominal Ø	flow rate Kvs	OPD			COILS	
			min.	max. AC	max. DC	code	[Volts/Hz]
code	[mm]	[l/min]	[barg]	[barg]	[barg]	code	[Volts/Hz]
<b>RB397CVA</b>	1.0	0.5	0	15	12	2250	24v DC
<b>RB397CVB</b>	1.2	0.7	0	15	12	2200	24v 50/60Hz
<b>RB397CVC</b>	1.5	1.0	0	10	8	2400	110v 50Hz - 120v 60Hz
<b>RB397CVE</b>	2.0	1.9	0	8	6	2600	200v 50Hz - 220v 60Hz
<b>RB397CVG</b>	2.5	2.5	0	4	4	2700	230v 50Hz - 240v 60Hz
<b>RB397CVH</b>	3.0	3.5	0	3.5	3.5		

### TYPE: SB397



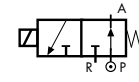
Normally Open

### TYPE: B397

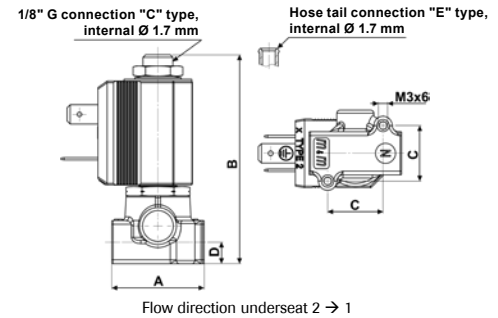


Normally Closed

### TYPE: RB397



Normally Open



Flow direction underseat 2 → 1

### B397 - FKM seal, NC

Coil power: AC 10va (holding)  
AC 16va (inrush)  
DC 7w

### OPTIONS

Manual override (e.g. code B397CVBM)  
Armature tube with hose tail Ø 6 mm (e.g. code B397EVE)  
UL approved coils (e.g. code 270R)

### SB397 - FKM seal, 2<sup>nd</sup> SERVICE -

Coil power: AC 10va (holding)  
AC 16va (inrush)  
DC 7w

### OPTIONS

Manual override (e.g. code SB397CVCM).

### NOTES

Flow direction: **OFF** 3 → 1 - **ON** 1 → 2

### RB397 - FKM seal, NO

Coil power: AC 10va (holding)  
AC 16va (inrush)  
DC 7w