

## 2/2 WAY DIRECT ACTING SOLENOID VALVE, G 1/8"

### COMMON FEATURES

Media: water, oil, air

Media temperature: -10°C ÷ +130°C

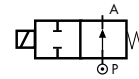
Ambient temperature: -10°C ÷ +50°C

Body material: brass (CW617N EN 12165)

Operator material: stainless steel

Protection class: IP 65 (with connector and gasket)

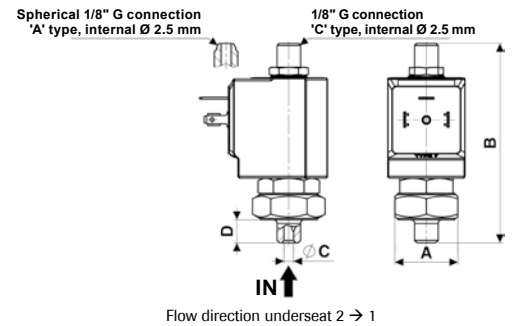
### TYPE: RD213



Normally Open



DIMENSIONS & WEIGHTS		RD213
<b>G connection</b>	[ISO 228]	1/8"
<b>A</b>	[mm]	Hex 26
<b>B</b>	[mm]	82.5
<b>C</b>	[mm]	4
<b>D</b>	[mm]	9.5
<b>weight</b>	[kg]	0.1



VALVE	nominal Ø	flow rate Kvs	OPD			COILS	
			min.	max. AC	max. DC	code	[Volts/Hz]
code	[mm]	[l/min]	[barg]	[barg]	[barg]	code	[Volts/Hz]
<b>RD213CVG</b>	2.5	2.4	0	16	16	7250	24v DC
						7200	24v 50/60Hz
						7400	110v 50Hz - 120v 60Hz
						7600	200v 50Hz - 220v 60Hz
						7700	230v 50Hz - 240v 60Hz

### RD213 - FKM seal, NO -

Seal material: foodgrade FKM

Coil power: AC 18vA (holding)

AC 36vA (inrush)

DC 14w

### OPTIONS

**EPDM** seal, temperature max. 120°C (e.g. code RD213CEG)

**Armature tube with spherical 1/8" G connection** (e.g. code RD213AVG)

