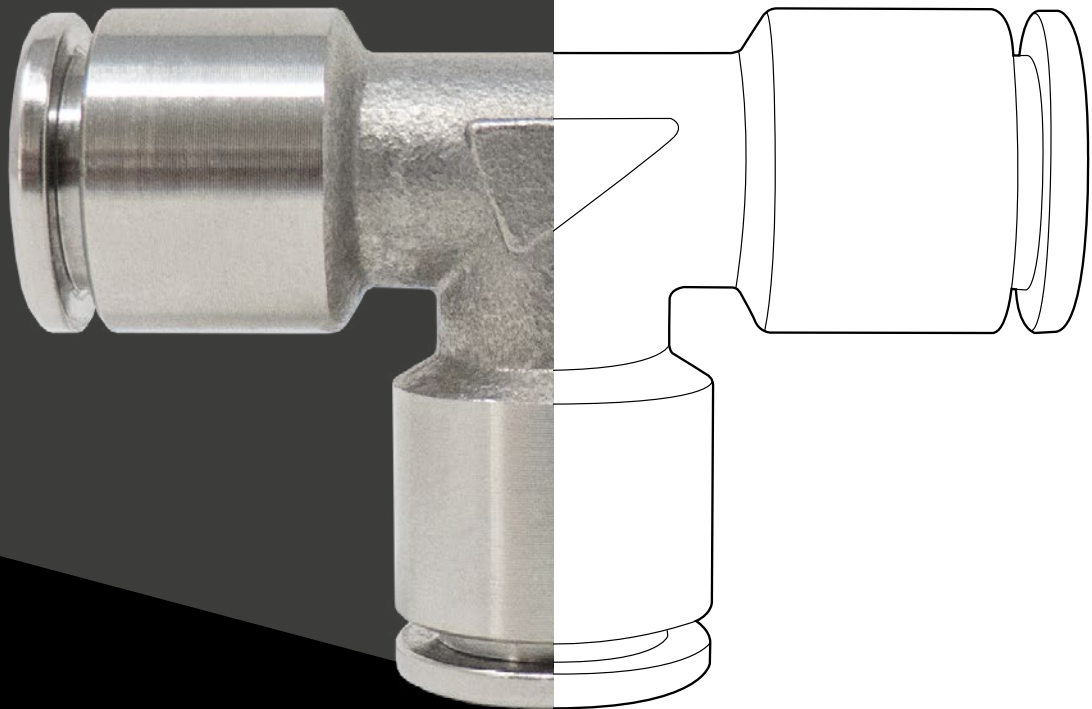


 **TierreFittings**[®]

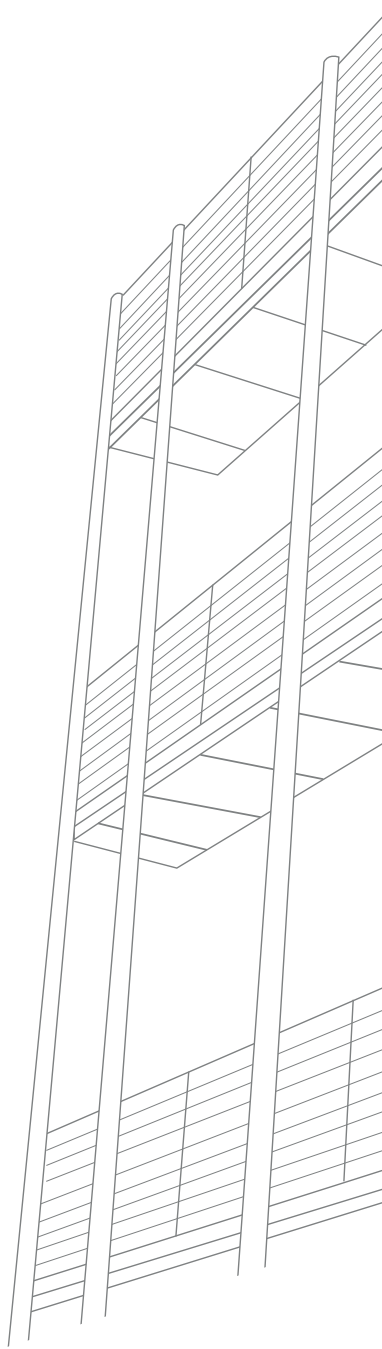
XVR SERIES



25
anniversary

 **TierreGroup**[®]
Unique vision





 **TierreGroup**®

 **TierreFittings**®

 **F-Line.PRO**

 **NET.Fit**®

 **INOX.Fit**®



XVR SERIES INOX AISI 316L



PLUS

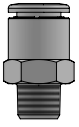
Suitable to be **USED IN AGGRESSIVE ENVIRONMENTS** and **IN CRITICAL CONDITIONS**

Suitable for **PERMANENT FOOD CONTACT APPLICATIONS**

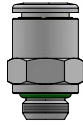
OPTIMIZED DESIGN with **COMPACT DIMENSIONS**

TAILOR MADE PRODUCTS ON SPECIFIC CUSTOMERS NEEDS





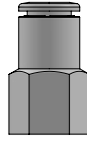
p. 8 / **XVRC-R**



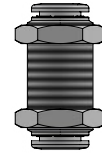
p. 8 / **XVRC-G**



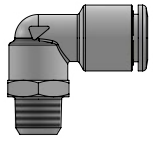
p. 8 / **XVROC-G**



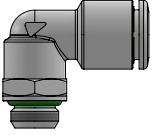
p. 9 / **XVRCF-G**



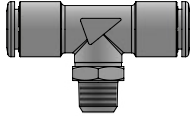
p. 9 / **XVRMM**



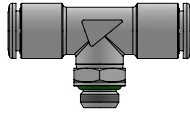
p. 9 / **XVRL-R**



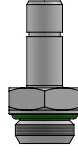
p. 10 / **XVRL-G**



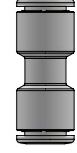
p. 10 / **XVRT-R**



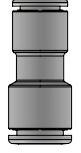
p. 10 / **XVRT-G**



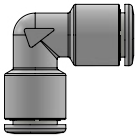
p. 11 / **XVRA-G**



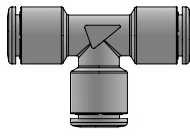
p. 11 / **XVRUC**



p. 11 / **XVRG**



p. 12 / **XVRUL**

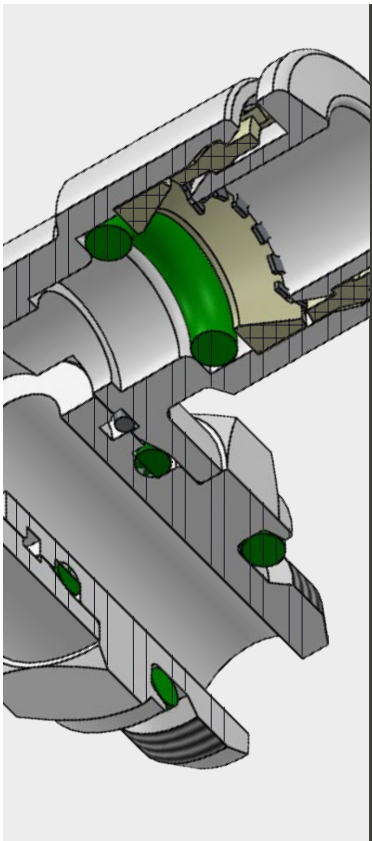


p. 12 / **XVRUT**



p. 12 / **XVRGJ**





-20°C ÷ 150°C



Max. working pressure:

20 Bar

Negative pressure:

- 0,95 Bar (- 95 Kpa)



Compressed air, vacuum,
water and fluids suitable with
the construction materials



- Taper gas BSPT ISO 7
R1/8" - R1/2"

- Parallel gas BSPP ISO 228
G1/8" - G1/2"

- Metric ISO 262
M5 - M7



Polyamide PA, Polyethylene PE,
FEP, PTFE and Inox tube with
groove (see the table)

Body: Stainless steel AISI 316L

Collet: Stainless steel AISI 316L

Back ring: PVDF-UHM FDA compliant

O'ring: FKM NSF/ANSI 61 certified and FDA compliant

Seal: FKM NSF/ANSI 61 certified and FDA compliant

Lock claw: Stainless steel AISI 301

Collar: PVDF-UHM FDA compliant

Retaining ring for swivel system: Stainless steel AISI 302



NSF/ANSI 169



Food contact materials
EC 1935/2004



D.M. 174/2004



ICIM certified product
food contact materials



ICIM certified product
water contact materials

SILICONE FREE

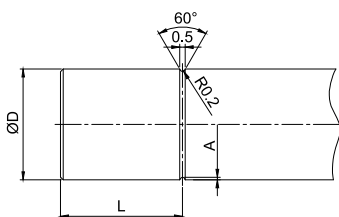


Products in compliance with
the directive 1907/2006



Products in compliance with
the directive EU 2015/863

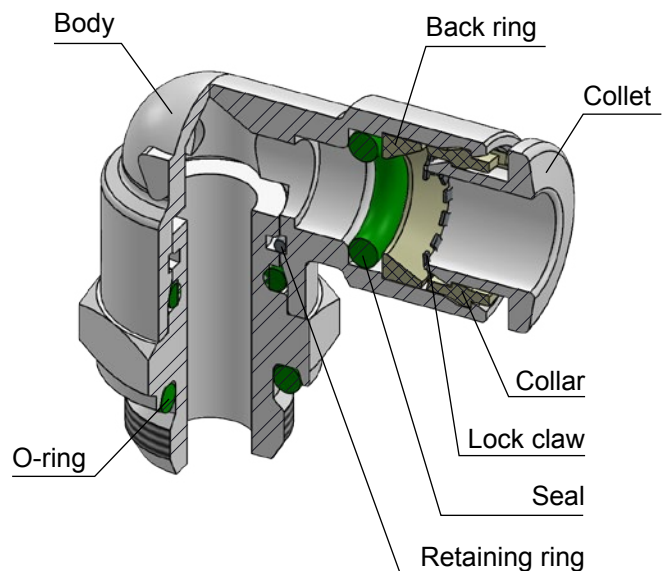
PIPE GROOVE - HARD METALLIC TUBE



When using metallic
tubes, please deburr
the tubes ends to avoid
potential cutting or other
damages to the O-ring.

ØD (mm)	L	A
4	7,6	0,23
6	8,0	0,23
8	9,0	0,23
10	11,0	0,23
12	12,7	0,23

CONSTRUCTION DETAILS

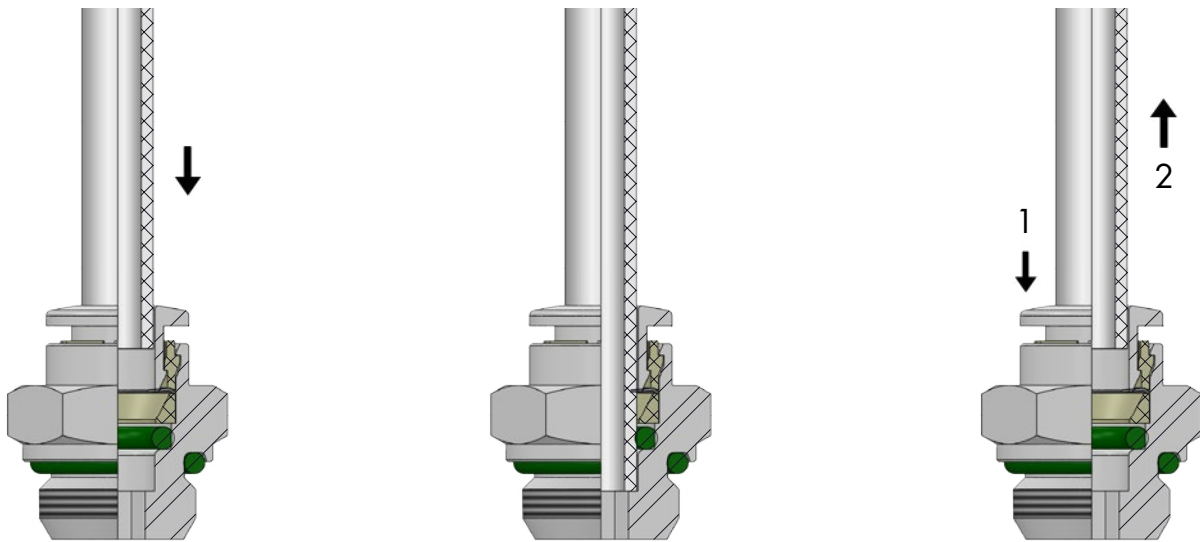


INSERTION OF THE TUBE INTO THE FITTING

- Make sure the tube is fully inserted into the fitting.
- To insert the tube into the fitting cut the tube off square (90°), insert tube up to the fitting end stop, and pull back gently to make sure it is correctly connected.
- If there is any damage or scratches on the tube surface the tube is an oval shape, air leakage and tube release may occur. Check the tube condition carefully.
- The OD of polyurethane tube expands when pressure is applied. Reinsertion into the fitting may not always be possible. Check the OD of the tube and renew it the expansion is out of tolerance.

DISCONNECTION OF THE TUBE FROM THE FITTING

- Make sure the pressure in the system is zero before releasing the tube from the fitting.
- To release the tube, press the release sleeve towards the fitting with one hand (1) and pull the tube away from the fitting with the other hand (2).
- Always remove the section of tube previously inserted into the fitting before reinserting the tube by cutting back the tube. Always use the correct tube cutter in order to cut the tube square and free of damage.



TUBE TOLERANCES

Ø TUBE (mm)	4	6	8	10	12
TOLERANCE (mm)	± 0,1	± 0,1	± 0,1	± 0,15	± 0,15

TUBE INSERTION DEPTH

Ø TUBE (mm)	4	6	8	10	12
TUBE INSERTION LENGTH (mm)	14	15,5	17,5	19	21

TIGHTENING TORQUE
TAPER GAS BSPT ISO 7

THREAD	1/8"	1/4"	3/8"	1/2"
Nm	10-12	14-16	16-18	18-20

TIGHTENING TORQUE
PARALLEL GAS BSPP ISO 228 & METRIC ISO 262

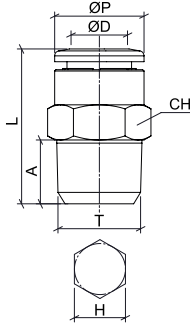
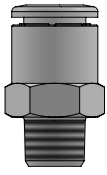
THREAD	M5x0,8	M7x1	1/8"	1/4"	3/8"	1/2"
Nm	1 ± 20%	3 ± 20%	6 ± 20%	7,5 ± 20%	9 ± 20%	9 ± 20%



XVRC-R



Male connector BSPT thread

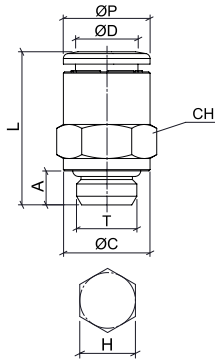
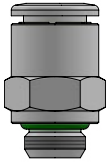


CODE	ØD	T	ØP	A	L	CH	H
XVRC04R01	4	R 1/8"	10	8	18,5	10	3
XVRC04R02		R 1/4"	10	10	20	14	3
XVRC06R01	6	R 1/8"	12	8	21	12	4
XVRC06R02		R 1/4"	12	10	20,5	14	4
XVRC08R01	8	R 1/8"	14	8	26	14	5
XVRC08R02		R 1/4"	14	10	24	14	6
XVRC08R03		R 3/8"	14	11	22	17	6
XVRC10R02	10	R 1/4"	16	10	31	16	7
XVRC10R03		R 3/8"	16	11	26	17	8
XVRC12R02	12	R 1/4"	19	10	33	19	7
XVRC12R03		R 3/8"	19	11	29,5	19	10
XVRC12R04		R 1/2"	19	14	27	22	10

XVRC-G



Male connector BSPP & metric thread

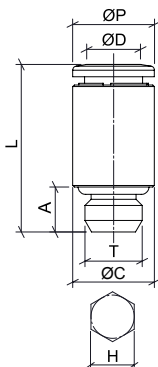


CODE	ØD	T	ØP	ØC	A	L	CH	H
XVRC04M5	4	M5x0,8	10	7	4	19	10	2,5
XVRC04G01		G 1/8"	10	13	5,5	18	13	3
XVRC04G02		G 1/4"	10	16	6,5	18	16	3
XVRC06M5	6	M5x0,8	12	7	5	21	12	2,5
XVRC06G01		G 1/8"	12	13	5,5	19,5	13	4
XVRC06G02		G 1/4"	12	16	6,5	19,5	16	4
XVRC08G01	8	G 1/8"	14	14	5,5	24,5	14	5
XVRC08G02		G 1/4"	14	16	6,5	21,5	16	6
XVRC08G03		G 3/8"	14	20	7,5	21,5	20	6
XVRC10G02	10	G 1/4"	16	16	6,5	27,5	16	7
XVRC10G03		G 3/8"	16	20	7,5	25	20	8
XVRC12G02	12	G 1/4"	19	16	6,5	30	19	7
XVRC12G03		G 3/8"	19	22	7,5	29,5	22	10
XVRC12G04		G 1/2"	19	25	9	28	25	10

XVROC-G



Male connector round body BSPP & metric thread



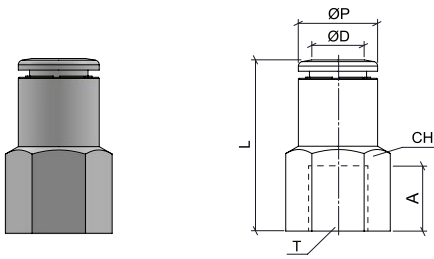
CODE	ØD	T	ØP	ØC	A	L	H
XVROC04M5	4	M5x0,8	10	10	4	19	2,5
XVROC04M7		M7x1	10	10	5,5	20,5	2,5
XVROC06M7C	6	M7x1	10	10	5,5	20,5	4
XVROC06G01		G 1/8"	12	14	5,5	19,5	4
XVROC08G01	8	G 1/8"	14	14	5,5	24,5	5



XVRCF-G



Female connector BSPP thread

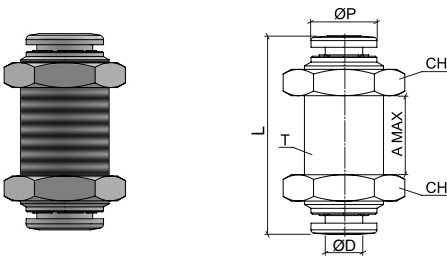


CODE	ØD	T	ØP	A	L	CH
XVRCF04G01	4	G 1/8"	10	7,5	24,5	13
XVRCF06G01	6	G 1/8"	12	7,5	26	13
XVRCF08G02	8	G 1/4"	14	11	30	16

XVRMM



Bulkhead connector

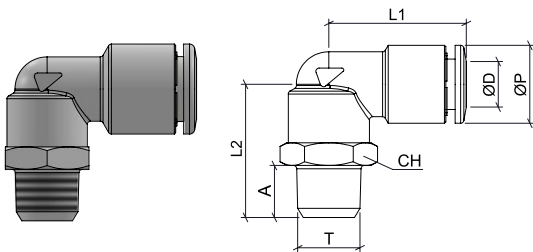


CODE	ØD	T	ØP	A (MAX)	L	CH
XVRMM04	4	M12x1	10	12	30	16
XVRMM06	6	M14x1	12	15	35,5	17
XVRMM08	8	M16x1	14	16	36,5	19
XVRMM10	10	M20x1	16	19	43	24
XVRMM12	12	M22x1,5	19	20	44	25

XVRL-R



Swivel male elbow BSPT thread



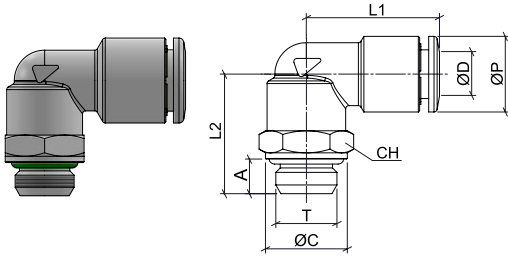
CODE	ØD	T	ØP	A	L1	L2	CH
XVRL04R01	4	R 1/8"	10	8	19,5	20,5	13
XVRL04R02		R 1/4"	10	10	19,5	23	14
XVRL06R01	6	R 1/8"	12	8	21	20,5	13
XVRL06R02		R 1/4"	12	10	21	23	14
XVRL08R01	8	R 1/8"	14	8	23	20,5	14
XVRL08R02		R 1/4"	14	10	23	23	14
XVRL08R03		R 3/8"	14	11	23	24,5	17
XVRL10R02	10	R 1/4"	16	10	26	25,5	16
XVRL10R03		R 3/8"	16	11	26	27	17
XVRL12R02	12	R 1/4"	19	10	31	28	20
XVRL12R03		R 3/8"	19	11	31	28,5	20
XVRL12R04		R 1/2"	19	14	31	31,5	22



XVRL-G



Swivel male elbow BSPP & metric

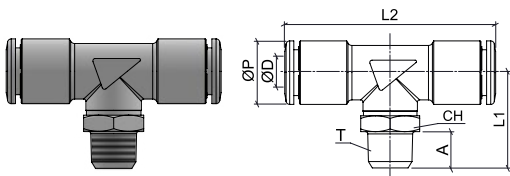


CODE	ØD	T	ØP	ØC	A	L1	L2	CH
XVRL04M5	4	M5x0,8	10	7	4	18	16,5	8
XVRL04G01		G 1/8"	10	13	5,5	19,5	19	13
XVRL04G02		G 1/4"	10	16	6,5	19,5	21,5	16
XVRL06M5	6	M5x0,8	12	7	4	21	16,5	8
XVRL06G01		G 1/8"	12	13	5,5	21	19	13
XVRL06G02		G 1/4"	12	16	6,5	21	21	16
XVRL08G01	8	G 1/8"	14	13	5,5	23	19	13
XVRL08G02		G 1/4"	14	16	6,5	23	21	16
XVRL08G03		G 3/8"	14	20	7,5	23	23	20
XVRL10G02	10	G 1/4"	16	16	6,5	26	23	16
XVRL10G03		G 3/8"	16	20	7,5	26	26	20
XVRL12G02	12	G 1/4"	19	16	6,5	31	-	-
XVRL12G03		G 3/8"	19	20	7,5	31	29	20
XVRL12G04		G 1/2"	19	25	9	31	29	25

XVRT-R



Swivel male tee BSPT thread

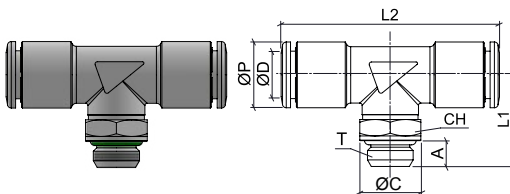


CODE	ØD	T	ØP	A	L1	L2	CH
XVRT04R01	4	R 1/8"	10	8	21	39	13
XVRT06R01	6	R 1/8"	12	8	21	42	13
XVRT06R02		R 1/4"	12	10	23,5	42	14
XVRT08R01	8	R 1/8"	14	8	21	46,5	13
XVRT08R02		R 1/4"	14	10	23,5	46,5	14

XVRT-G



Swivel male tee BSPP & metric thread

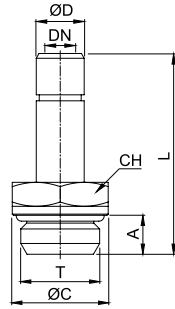
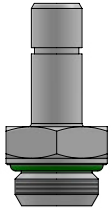


CODE	ØD	T	ØP	ØC	A	L1	L2	CH
XVRT04M5	4	M5x0,8	10	7	4	17	32	8
XVRT04G01		G 1/8"	10	13	5,5	19,5	39	13
XVRT06M5	6	M5x0,8	12	7	4	17	40	8
XVRT06G01		G 1/8"	12	13	5,5	19,5	42	13
XVRT06G02		G 1/4"	12	16	6,5	22	42	16
XVRT08G01	8	G 1/8"	14	13	5,5	19,5	46,5	13
XVRT08G02		G 1/4"	14	16	6,5	22	46,5	16
XVRT10G02	10	G 1/4"	16	16	6,5	23	52	16
XVRT10G03		G 3/8"	16	20	7,5	26	52	20
XVRT12G03	12	G 3/8"	19	20	7,5	26,5	62	20
XVRT12G04		G 1/2"	19	25	9	29	62	25

XVRA-G



Stem adapter BSPP thread

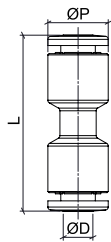
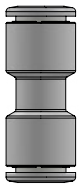


CODE	ØD	T	ØC	A	L	DN	CH
XVRA04G01	4	G 1/8"	13	5,5	27,0	2	13
XVRA06G01	6	G 1/8"	13	5,5	28,0	4	13
XVRA06G02		G 1/4"	16	6,5	30,5	4	16
XVRA08G01	8	G 1/8"	13	5,5	29,5	6	13
XVRA08G02		G 1/4"	16	6,5	32,0	6	16
XVRA10G02	10	G 1/4"	16	6,5	36,5	8	16
XVRA12G03	12	G 3/8"	20	7,5	38,5	10	20

XVRUC



Union connector

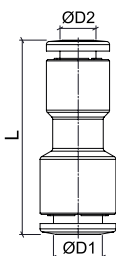
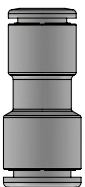


CODE	ØD	ØP	L
XVRUC04	4	10	29
XVRUC06	6	12	32
XVRUC08	8	14	35,5
XVRUC10	10	16	39,5
XVRUC12	12	19	44

XVRG



Reduced union connector



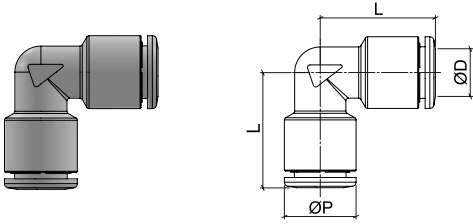
CODE	ØD1	ØD2	L
XVRG0604	6	4	30,5
XVRG0806	8	6	34
XVRG1008	10	8	37
XVRG1210	12	10	41,5



XVRUL



Union elbow

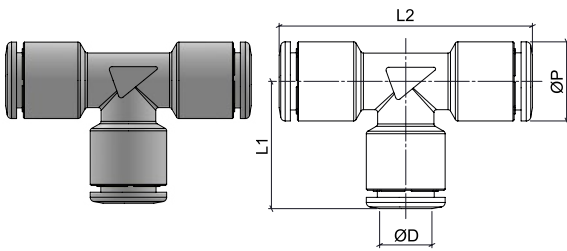


CODE	ØD	ØP	L
XVRUL04	4	10	16,5
XVRUL06	6	12	20,5
XVRUL08	8	14	22,5
XVRUL10	10	16	25
XVRUL12	12	19	29

XVRUT



Union tee

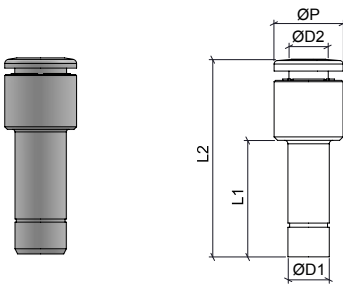


CODE	ØD	ØP	L1	L2
XVRUT04	4	10	16,5	33
XVRUT06	6	12	20,5	41
XVRUT08	8	14	22,5	45
XVRUT10	10	16	25	50,5
XVRUT12	12	19	29	58

XVRGJ



Stem reduction



CODE	ØD1	ØD2	ØP	L1	L2
XVRGJ0604	6	4	10	17	28,5
XVRGJ0806	8	6	12	19,5	32,5
XVRGJ1006	10	6	10	24	37
XVRGJ1008	10	8	14	24	38





NSF CERTIFICATION FOR TIERRE GROUP S.P.A.

NSF International

789 N. Dixboro Road, Ann Arbor, MI 48105 USA

RECOGNIZES

Tierre Group S.p.A.
Italy

AS COMPLYING WITH NSF/ANSI 169 AND ALL APPLICABLE REQUIREMENTS.
PRODUCTS APPEARING IN THE NSF OFFICIAL LISTING ARE
AUTHORIZED TO BEAR THE NSF MARK.



ISO/IEC 17065
Product Certification Body
#0216

Certification Program
Accredited by the
American National
Standards Institute



Certification Program
Accredited by the
Standards Council
of Canada

This certificate is the property of NSF International and must be returned upon request. This certificate remains valid as long as this client has products in NSF's Official Listings for the referenced standards. For the most current and complete Listing information, please access NSF's website (www.nsf.org).

July 10, 2019
Certificate# C0484626 - 01

A handwritten signature in black ink, appearing to read "S. Krol", written over a horizontal line.

Sarah Krol
Global Managing Director, Food Safety Product Certification



FOOD CONTACT MATERIALS DECLARATION - EC 1935/2004 *

* Full certification available on our website (www.tierrefittings.com) or on request.



Tierre Group S.p.a.
 Headquarter: Via Dell'Industria 18 – 20032 Cormano (MI) – Italy
 Warehouse: Via Dell'Artigianato 2 – 20032 Cormano (MI) – Italy
 Production: Via Marco Biagi 1 – 25045 Castegnato (BS) – Italy
 C.F. e P.IVA IT 12437570158 – Capital €120.000,00 i.v.
 REA MI-1558390

Phone. +39 02 663088.1 – Fax +39 02 66304172
www.tierregroup.com – info@tierregroup.com

DECLARATION OF CONFORMITY

FCMs

Food Contact Materials



TIERRE GROUP S.p.a.
DECLARES

That the items related to the following product range

PUSH-IN FITTINGS
XVR SERIES INOX AISI 316L

items produced with the following materials
 AISI 316L Stainless Steel - AISI 302 Stainless - Steel AISI 301 Stainless Steel
 Viton - EPDM (option)

ARE IN COMPLIANCE WITH

To the following General Community Legislation:

EC 1935/2004 regulation of the European Parliament and of the Council dated 27th October 2004 on materials and articles intended to come into contact with food and abrogating the Directives 80/590/EEC and 89/109/EEC.
 Commission Regulation **EC 2023/2006** dated 22nd December 2006 on good manufacturing practice for materials and articles intended to come into contact with food.
 Commission Regulation **EU 2020/1245** dated 2nd September 2020, on plastic materials and articles intended to come into contact with food.

To the following General National Legislation:

Art. 1, art. 3, art 4 paragraph 5, art. 6 of the Presidential Decree dated 23rd August 1982, No. 777, Implementation of the Directive (EEC) No. 76/893 and subsequent amendments, starting from the entry into force of the Legislative Decree dated 10th February 2017, No. 29, Sanctioning discipline for the violation of the provisions as listed in the CE regulations regarding materials and objects intended to come into contact with food products and food in general.

To the following Specific National Legislation:

Ministerial Decree No. 34 dated 21st March 1973, Hygienic regulations for packaging, containers, utensils intended to come into contact with food substances or substances for personal use and subsequent updates and modifications.
 These materials are in compliance with the applicable community and national regulations concerning materials and articles intended to come into contact with food. Consequently, the products meet the requirements of the European Regulations and National Legislation as listed above.

For all the metal alloys different from aluminum and stainless steel, including surface treatments, as no specific measures have been taken at national and / or community level, the suitability has been evaluated according to the principles of the **art. 3 of the EC regulation 1935/2004** using the Resolution of the Council of Europe as a practical guideline:

Metal and Alloys used in food contact materials and articles Resolution CM/Res (2013)9.



D.M. 174/2004 DECLARATION

* Full certification available on our website (www.tierrefittings.com) or on request.



Tierre Group S.p.a.
 Headquarter: Via Dell'Industria 18 – 20032 Cormano (MI) – Italy
 Warehouse: Via Dell'Artigianato 2 – 20032 Cormano (MI) – Italy
 Production: Via Marco Biagi 1 – 25045 Castegnato (BS) – Italy
 C.F. e P.IVA IT 12437570158 – Capital €120.000,00
 REA MI-1558390

Phone. +39 02 663088.1 – Fax +39 02 66304172
www.tierregroup.com – info@tierregroup.com

**DECLARATION OF CONFORMITY
 D.M. 174/2004**



Regulation concerning materials and objects intended to be used in fixed systems for the collection, treatment, adduction and distribution of water for human consumption.

**TIERRE GROUP S.p.a.
 DECLARES**

that the items related to the following product range

**PUSH-IN FITTINGS
 XVR SERIES INOX AISI 316L**

items produced with the following materials
 AISI 316L Stainless Steel - AISI 302 Stainless - Steel AISI 301 Stainless Steel
 Viton - EPDM (option)

ARE IN COMPLIANCE WITH

the Italian Decree dated 6th April 2004, n. 174 of the Ministry of Health. Regulation concerning materials and objects intended to be used in fixed systems for the collection, treatment, adduction and distribution of water for human consumption (G.U. n. 166 dated 17-7-2004)

The conformity test has been realized by ICIM on the basis of the above.

It's responsibility of the user to check the eventual suitability of the products for the usage at the specific conditions of use. Tierre Group S.p.a. recommends to do a washing cycle of the circuit realized using the products object of this declaration before starting the system.

This declaration doesn't give any indication regarding the usability from a technical and a technological point of view. It's responsibility of the user to check the suitability of the material for the application. At the same time it's responsibility of the industrial and the commercial operators to maintain the traceability of the products supplied by Tierre Group S.p.a.

All the supporting documents relating to this declaration, including those referring to the tests realized on the products and demonstrating the conformity of the products themselves, are available to be checked by the competent authorities, when asked, at the Tierre Group S.p.a. headquarters.

This declaration is valid starting from the date below mentioned and will be replaced if some substantial changes are introduced, such as modifications in the production of materials changing the essential requirements in compliance with the conformity or modifications and updates in the legislative references mentioned in this declaration. In these cases a new audit will be required in accordance with the conformity.

Cormano, 15th December 2022

TIERRE GROUP S.p.a
 Dott. Marco Regis



M2DC rev.0 Gennaio 2020



ICIM PRODUCT CERTIFICATION: FOOD CONTACT MATERIALS



PRD N° 004 B

Il presente documento annulla e sostituisce il certificato di pari numero emesso in data 13/05/2021.

0549CM_00_IT



Certificazione di Prodotto

Product Certification

Certificato N. **ICIM-MOC-009809-00**
 Certificate No.

ALL'AZIENDA / TO THE FIRM

TIERRE GROUP S.P.A.
 VIA DELL'INDUSTRIA, 18 20032 CORMANO MI IT - Italia

PER I SEGUENTI PRODOTTI / FOR THE FOLLOWING PRODUCTS

Raccordi ad innesto rapido in acciaio inox AISI 316L.
Raccordi ad innesto rapido in ottone con trattamento T.E.A.
Raccordi ad innesto rapido in ottone CW510L
AISI 316L stainless steel push-in fittings.
Brass push-in fittings with T.E.A. plating
CW510L Brass push-in fittings

CON DENOMINAZIONE COMMERCIALE / WITH TRADE NAME/S

Serie XVR INOX AISI 316L / XVR SERIES INOX AISI 316L
Food grade serie HFR/ Food grade HFR SERIES
Serie LFR(P) / LFR(P) Series
Serie HLFR (P) / HLFR(P) Series

CONFORMEMENTE AL DOCUMENTO NORMATIVO ICIM / IN COMPLIANCE WITH ICIM NORMATIVE DOCUMENT

0445CS

PRODOTTI E COMPONENTI A CONTATTO CON ALIMENTI SECONDO DISPOSIZIONI MOCA
 PRODUCTS AND COMPONENTS IN CONTACT WITH FOOD ACCORDING TO FCM REGULATIONS



Vincenzo Delacqua
 Rappresentante Direzione / Management Representative

ICIM S.p.A.

PRIMA EMISSIONE FIRST ISSUE	EMISSIONE CORRENTE CURRENT ISSUE	DATA DI SCADENZA EXPIRING DATE
13/02/2020	09/11/2022	12/02/2025

ICIM S.p.A. - Piazza Don Enrico Mapelli, 75 - 20099 Sesto San Giovanni (MI)
 Società soggetta all'attività di direzione e coordinamento di ICIM GROUP Srl



ICIM PRODUCT CERTIFICATION: WATER CONTACT MATERIALS

Il presente documento annulla e sostituisce il certificato di pari numero emesso in data 13/02/2020.	 <p>PRD N° 004 B Membro degli Accordi di Mutuo Riconoscimento EA, IAF e ILAC Signatory of EA, IAF and ILAC Mutual Recognition Agreements</p>			
	Certificazione di Prodotto <i>Product Certification</i>			
	Certificato N. <i>Certificate No.</i>		ICIM-CAP-009810-00	
	<small>ALL'AZIENDA / TO THE FIRM</small>			
	TIERRE GROUP S.P.A. Via dell'Industria, 18 – 20032 Cormano (MI) Italia			
	<small>UNITÀ OPERATIVE / OPERATIVE UNITS</small> Via dell'Industria, 18 – 20032 Cormano (MI) Italia			
	<small>PER I SEGUENTI PRODOTTI / FOR THE FOLLOWING PRODUCTS</small> Raccordi ad innesto rapido in acciaio inox AISI 316L. Raccordi ad innesto rapido in ottone CW510L. <i>AISI 316L stainless steel push-in fittings. CW510L Brass push-in fittings.</i>			
	<small>CON DENOMINAZIONE COMMERCIALE / WITH TRADE NAME/S</small> Serie XVR INOX AISI 316L / XVR SERIES INOX AISI 316L Serie LFR(P) / LFR(P) Series			
	<small>CONFORMEMENTE AL DOCUMENTO NORMATIVO ICIM / IN COMPLIANCE WITH ICIM NORMATIVE DOCUMENT</small> 0415CS Prodotti e componenti utilizzati a contatto con acqua destinata al consumo umano (acqua potabile) sulla base di riferimento delle indicazioni del DM n. 174/2004. Products and components in contact with water intended for human consumption (drinking water) on the basis of the indications of Ministerial Decree nr. 174/2004			
	 Vincenzo Delacqua Rappresentante Direzione / Management Representative			
ICIM S.p.A.				
<small>PRIMA EMISSIONE FIRST ISSUE</small> 13/02/2020	<small>EMISSIONE CORRENTE CURRENT ISSUE</small> 13/05/2021	<small>DATA DI SCADENZA EXPIRING DATE</small> 12/02/2025		
<small>ICIM S.p.A. - Piazza Don Enrico Mapelli, 76 - 20099 Gesto San Giovanni (MI)</small>				

0549CM_00_IT





Tierre Group S.p.a.

via dell'Industria, 18 - 20032 Cormano (MI)

Tel. +39 02 663088.1 - Fax +39 02 66304172

www.tierregroup.com - info@tierregroup.com

C.F. e P.IVA 12437570158

Cap. Soc. Euro 120.000,00 i.v. - REA MI-1558390

XVR Series Catalogue - Ed. 1.3 - 03/23