

-40°C ÷ +82°C



Working pressure:
8 Bar
Negative pressure:
- 0,95 Bar (- 95 Kpa)



20AC series:
3,0 mm
40AC series:
6,2 mm



Compressed air, vacuum,
water and fluids suitable with
construction materials



Taper gas BSPT ISO 7
from R1/8" to R3/8"

Body: POM
Internal valve: POM
Internal valve spring: Stainless steel
AISI 316
Seals: BUNA-N FDA & NSF compliant
Thumb-latch: Stainless steel
External spring & PIN: Stainless steel



FEATURES

The fittings of this series have plastic thread and consequently we recommend to avoid excessive force during screwing and to teflon the thread before use in order to prevent any type of loss.



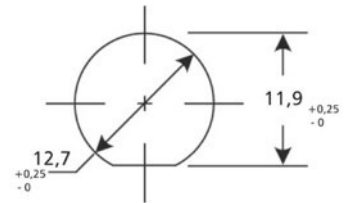
Products in compliance with
EC Regulation 1907/2006



Products in compliance with
the directive EU 2015/863

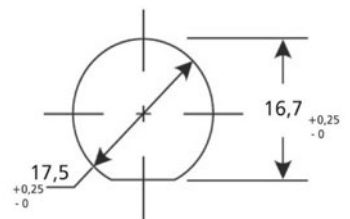
DIMENSIONS FOR PANEL MOUNTING
QUICK COUPLINGS ACETAL RESIN - 20AC

	MIN. WALL THICKNESS (mm)	MAX. WALL THICKNESS (mm)	PANEL NUT HEX SIZE (mm)	PANEL NUT THREAD
COUPLING	1,3	12,7	16	1/2" (24 UNS)
CONNECTOR	1,3	7,6	16	1/2" (24 UNS)



DIMENSIONS FOR PANEL MOUNTING
QUICK COUPLINGS ACETAL RESIN - 40AC

	MIN. WALL THICKNESS (mm)	MAX. WALL THICKNESS (mm)	PANEL NUT HEX SIZE (mm)	PANEL NUT THREAD
COUPLING	1,3	12,7	21	11/16" (24 UNS)
CONNECTOR	1,3	7,6	21	11/16" (24 UNS)

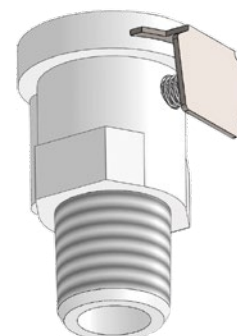


BARB Ø
ACETAL RESIN BARB CONNECTOR

ØD (mm)	3,2	4,8	6,4	8,0	9,5
ØB (mm)	4,8	6,3	7,6	9,1	10,7

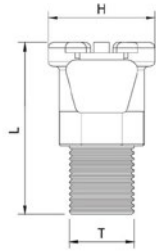


VIEW - QUICK COUPLING 20AC100



20AC100

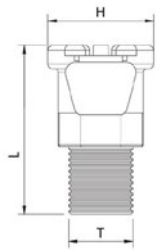
Male quick coupling BSPT thread, DN 3,0mm



CODE	INTERCEPTED	T	L	H
20AC100L-R01	NO	R 1/8"	25,4	15,8
20AC100V-R01	YES	R 1/8"	25,4	15,8
20AC100L-R02	NO	R 1/4"	27,9	15,8
20AC100V-R02	YES	R 1/4"	27,9	15,7

40AC100

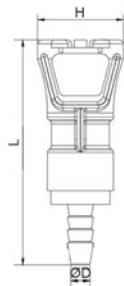
Male quick coupling BSPT thread, DN 6,2mm



CODE	INTERCEPTED	T	L	H
40AC100L-R02	NO	R 1/4"	29,2	19,1
40AC100V-R02	YES	R 1/4"	29,2	19,1
40AC100L-R03	NO	R 3/8"	29,2	19,1
40AC100V-R03	YES	R 3/8"	29,2	19,1

20AC110

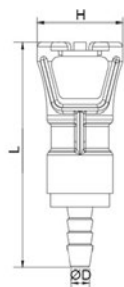
Quick coupling with barb connector, DN 3,0mm



CODE	INTERCEPTED	ØD	BARB	L	H
20AC110L-48	NO	3,2	4,8	41,7	15,8
20AC110V-48	YES	3,2	4,8	41,7	15,8
20AC110L-63	NO	4,8	6,4	45,7	15,8
20AC110V-63	YES	4,8	6,4	45,7	15,8
20AC110L-76	NO	6,4	7,6	45,7	15,8
20AC110V-76	YES	6,4	7,6	45,7	15,8

40AC110

Quick coupling with barb connector, DN 6,2mm

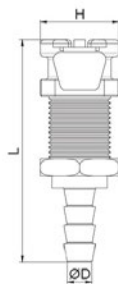


CODE	INTERCEPTED	ØD	BARB	L	H
40AC110L-76	NO	6,4	7,6	48,3	19,1
40AC110V-76	YES	6,4	7,6	48,3	19,1
40AC110L-91	NO	8,0	9,1	49,3	19,1
40AC110V-91	YES	8,0	9,1	49,3	19,1
40AC110L-107	NO	9,5	10,7	48,3	19,1
40AC110V-107	YES	9,5	10,7	48,3	19,1



20AC120

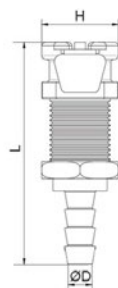
Bulkhead quick coupling with barb connector, DN 3,0mm



CODE	INTERCEPTED	ØD	BARB	L	H
20AC120L-48	NO	3,2	4,8	41,9	15,8
20AC120V-48	YES	3,2	4,8	41,9	15,8
20AC120L-63	NO	4,8	6,4	46,0	15,8
20AC120V-63	YES	4,8	6,4	46,0	15,8
20AC120L-76	NO	6,4	7,6	45,7	15,8
20AC120V-76	YES	6,4	7,6	45,7	15,8

40AC120

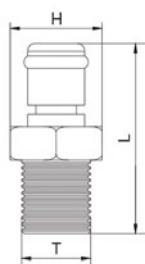
Bulkhead quick coupling with barb connector, DN 6,2mm



CODE	INTERCEPTED	ØD	BARB	L	H
40AC120L-76	NO	6,4	7,6	48,3	19,1
40AC120V-76	YES	6,4	7,6	48,3	19,1
40AC120L-91	NO	8,0	9,1	49,0	20,4
40AC120V-91	YES	8,0	9,1	49,0	20,4
40AC120L-107	NO	9,5	10,6	48,3	20,4
40AC120V-107	YES	9,5	10,6	48,3	20,4

20AC101

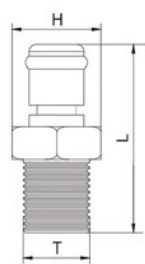
Male connection BSPT thread, DN 3,0mm



CODE	INTERCEPTED	T	L	H
20AC101L-R01	NO	R 1/8"	26,2	12,7
20AC101V-R01	YES	R 1/8"	34,8	12,7
20AC101L-R02	NO	R 1/4"	28,7	14,2
20AC101V-R02	YES	R 1/4"	35,3	14,2

40AC101

Male connection BSPT thread, DN 6,2mm

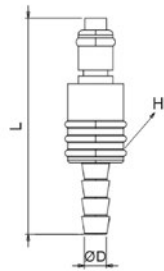


CODE	INTERCEPTED	T	L	H
40AC101L-R02	NO	R 1/4"	31,8	16,0
40AC101L-R03	NO	R 3/8"	32,0	19,1



20AC111

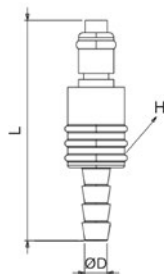
Connection with barb connector, DN 3,0mm



CODE	INTERCEPTED	ØD	BARB	L	H
20AC111L-48	NO	3,2	4,8	24,7	12,7
20AC111V-48	YES	3,2	4,8	41,9	14,0
20AC111L-63	NO	4,8	6,4	28,8	12,7
20AC111V-63	YES	4,8	6,4	46,0	14,0
20AC111L-76	NO	6,4	7,6	28,8	12,7
20AC111V-76	YES	6,4	7,6	46,0	14,0

40AC111

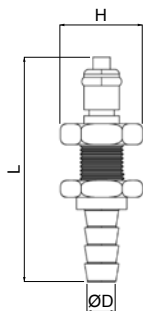
Connection with barb connector, DN 6,2mm



CODE	INTERCEPTED	ØD	BARB	L	H
40AC111L-76	NO	6,4	7,6	31,8	15,6
40AC111V-76	YES	6,4	7,6	49,3	17,8
40AC111L-91	NO	8,0	9,1	32,8	15,6
40AC111V-91	YES	8,0	9,1	50,5	17,9
40AC111L-107	NO	9,5	10,6	32,2	16,6
40AC111V-107	YES	9,5	10,6	46,2	17,9

20AC121

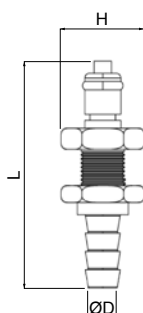
Bulkhead connection with barb connector, DN 3,0mm



CODE	INTERCEPTED	ØD	BARB	L	H
20AC121L-48	NO	3,2	4,8	40,4	15,8
20AC121V-48	YES	3,2	4,8	43,2	15,8
20AC121L-63	NO	4,8	6,4	45,0	15,8
20AC121V-63	YES	4,8	6,4	47,4	15,8
20AC121L-76	NO	6,4	7,6	44,7	15,8
20AC121V-76	YES	6,4	7,6	47,2	15,8

40AC121

Bulkhead connection with barb connector, DN 6,2mm

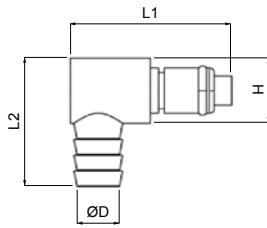


CODE	INTERCEPTED	ØD	BARB	L	H
40AC121L-76	NO	6,4	7,6	47,2	20,4
40AC121V-76	YES	6,4	7,6	50,8	20,4
40AC121V-91	YES	8,0	9,1	52,1	19,0
40AC121L-107	NO	9,5	10,7	47,5	19,0
40AC121V-107	YES	9,5	10,7	51,1	20,4



20AC131

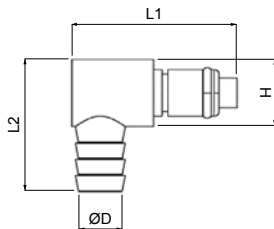
Elbow connection with barb connector, DN 3,0mm



CODE	INTERCEPTED	ØD	BARB	L1	L2	H
20AC131L-48	NO	3,2	4,8	21,7	25,4	12,7
20AC131V-48	YES	3,2	4,8	30,3	24,2	12,7
20AC131L-76	NO	6,4	7,6	25,4	29,2	12,7
20AC131V-76	YES	6,4	7,6	30,3	28,0	12,7

40AC131

Elbow connection with barb connector, DN 6,2mm



CODE	INTERCEPTED	ØD	BARB	L1	L2	H
40AC131L-76	NO	6,4	7,6	27,9	32,3	16,0
40AC131V-76	YES	6,4	7,6	34,1	31,1	16,0
40AC131L-107	NO	9,5	10,6	27,9	32,3	16,0
40AC131V-107	YES	9,5	10,6	35,2	31,3	16,0

