

+4°C ÷ +90°C
Subject to applications



Working pressure:
14 Bar (at 20°C)
Depending on the tube used



Compressed air, water and fluids suitable with construction materials



- Taper gas BSPT ISO 7 from R1/8" to R1"
- Parallel gas BSPP ISO 228 from G1/8" to G1"



Suitable for use with LDPE class 2.5 and 4 tubes.
Can be used with plastic and rubber tubes



Body: Polypropylene

FEATURES

- The fittings of this series have plastic thread and consequently we recommend to avoid excessive force during screwing and to teflon the thread before use in order to prevent any type of loss.
- It is recommended to insert the tube to the end and tightened with the clamp.
- Cut the part of the tube attached to the fitting in order to reutilize it.

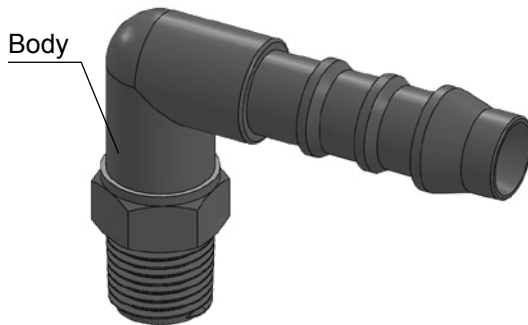


Products in compliance with EC Regulation 1907/2006

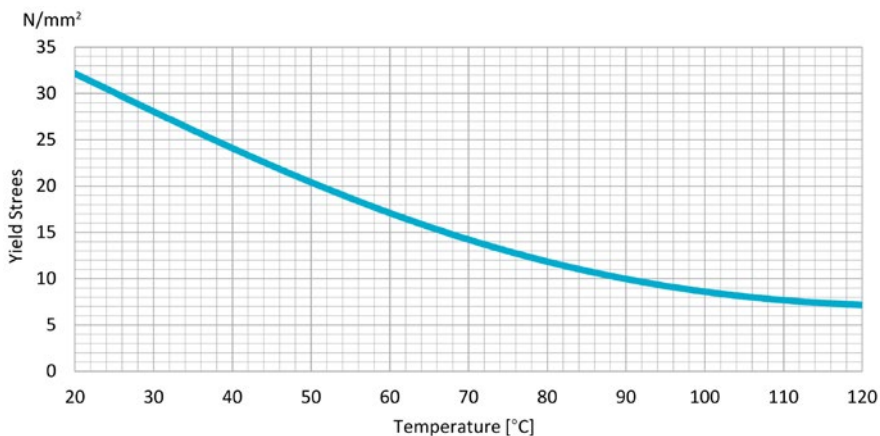


Products in compliance with the directive EU 2015/863

CONSTRUCTION DETAILS



YIELD STRESS OF POLYPROPYLENE AS A FUNCTION OF TEMPERATURE

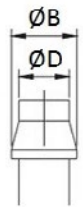


TIGHTENING TORQUE
TAPER GAS BSPT ISO 7

THREAD	1/8"	1/4"	3/8"	1/2"	3/4"	1"
Nm	0,01	0,3	1	2	5	8

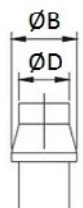
DIAMETER OF THE BARB
BARB CONNECTORS - POLYPROPYLENE

OD EXTERNAL TUBE	Ø12	Ø16	Ø20	Ø25
ØB - BARB (mm)	11,8	15,1	18,8	23,0
ØD (mm)	9,8	12,9	16,2	20,4



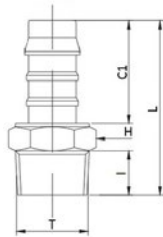
DIAMETER OF THE BARB
BARB CONNECTORS - POLYPROPYLENE - ONLY FOR CODE 5570

OD EXTERNAL TUBE	Ø6	Ø8	Ø10	Ø12	Ø14	Ø16	Ø19
ØB - BARB (mm)	8,1	10,2	12,4	13,9	15,9	18,1	21,0
ØD (mm)	6,1	8,1	10,1	11,9	13,8	15,9	18,8



5510

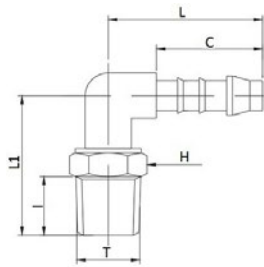
Male barb connector BSPT thread



CODE	T	OD	I	C1	L	H	g
5510TR1812	R 1/8"	12	7,5	30,0	44,0	11	2,0
5510TR1412	R 1/4"	12	11,0	30,0	47,7	14	3,0
5510TR3812	R 3/8"	12	10,5	30,0	47,3	17	3,0
5510TR1212	R 1/2"	12	13,0	30,0	50,8	22	3,5
5510TR3412	R 3/4"	12	13,0	30,0	51,4	27	4,0
5510TR1416	R 1/4"	16	10,5	31,0	47,6	14	3,5
5510TR1216	R 1/2"	16	13,0	30,0	51,3	22	5,0
5510TR3416	R 3/4"	16	13,0	28,0	52,0	27	4,5
5510TR1220	R 1/2"	20	13,0	32,5	52,2	22	5,0
5510TR3420	R 3/4"	20	13,0	32,5	54,0	27	7,0
5510TR120	R 1"	20	18,0	32,5	59,0	36	18,0
5510TR1225	R 1/2"	25	13,0	32,5	53,3	22	6,0
5510TR3425	R 3/4"	25	13,0	32,5	54,5	27	8,0
5510TR125	R 1"	25	17,0	32,5	59,0	36	14,0

5520

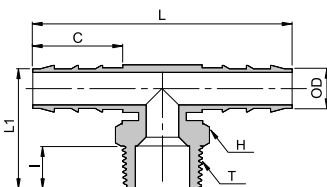
Male elbow barb connector BSPT thread



CODE	T	OD	I	C	L	L1	H	g
5520TR1412	R 1/4"	12	11,0	30,0	41,0	32,0	14	3,0
5520TR3812	R 3/8"	12	11,0	30,0	41,0	32,0	14	4,0
5520TR1212	R 1/2"	12	13,0	30,0	41,0	32,0	22	4,5
5520TR3412	R 3/4"	12	13,0	30,0	41,0	36,0	27	5,5
5520TR3816	R 3/8"	16	11,0	30,0	45,0	28,0	22	6,0
5520TR1216	R 1/2"	16	13,0	30,0	43,0	32,0	22	7,0
5520TR3416	R 3/4"	16	13,0	30,0	45,0	34,0	27	8,5
5520TR1220	R 1/2"	20	13,0	32,5	48,0	35,0	22	10,0
5520TR3420	R 3/4"	20	13,0	32,5	48,0	37,0	27	11,0
5520TR1225	R 1/2"	25	13,0	32,5	46,0	37,0	27	12,0
5520TR3425	R 3/4"	25	13,0	32,5	46,0	38,0	27	13,0

5530

Male tee barb connector BSPT thread

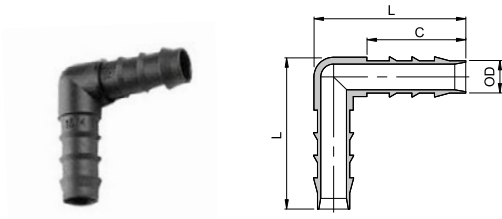


CODE	T	OD	I	C	L	L1	H	g
5530TR1412	R 1/4"	12	11,0	30,0	84,7	34,1	14	3,0
5530TR3812	R 3/8"	12	11,0	30,0	84,9	34,3	22	3,5
5530TR1212	R 1/2"	12	13,0	30,0	84,9	38,4	22	5,0
5530TR3412	R 3/4"	12	14,0	30,0	84,8	38,9	27	6,0
5530TR3816	R 3/8"	16	11,0	30,0	86,2	36,3	17	5,5
5530TR1216	R 1/2"	16	13,0	30,0	86,2	40,0	22	7,5
5530TR3416	R 3/4"	16	14,0	30,0	86,2	41,0	27	8,5
5530TR1220	R 1/2"	20	13,0	32,5	93,7	45,5	22	12,0
5530TR3420	R 3/4"	20	14,0	32,5	93,7	46,6	27	14,5
5530TR1225	R 1/2"	25	13,0	32,5	93,7	47,6	22	16,5
5530TR3425	R 3/4"	25	14,0	32,5	93,8	48,6	27	19,0



5540

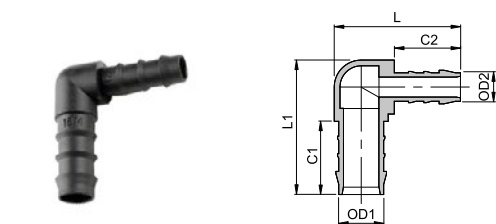
Union elbow barb connector



CODE	ØD	C	L	g
5540TR12	12	30,0	48,2	3,0
5540TR16	16	30,0	49,6	5,0
5540TR20	20	32,5	56,8	7,5
5540TR25	25	32,5	58,8	11,0

5545

Reduced union elbow barb connector



CODE	OD1	OD2	C1	C2	L	L1	g
5545TR1612	16	12	30,0	30,0	51,2	49,5	4,6
5545TR2012	20	12	32,5	30,0	56,4	55,0	7,94
5545TR2016	20	16	32,5	30,0	56,4	54,8	8,7
5545TR2520	25	20	32,5	32,5	58,3	56,4	10,2

5550

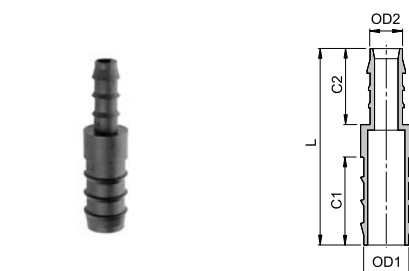
Union barb connector



CODE	OD	C	L	L1	g
5550TR12	12	30,0	68,6	34,5	3,0
5550TR16	16	30,0	71,4	36,0	4,0
5550TR20	20	32,5	76,5	38,5	5,0
5550TR25	25	32,5	76,5	38,5	8,0

5555

Reduced union barb connector

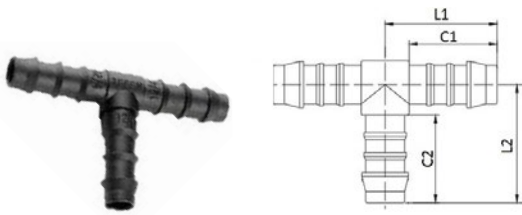


CODE	OD1	OD2	C1	C2	L	g
5555TR1612	16	12	30,0	30,0	71,5	3,7
5555TR2012	20	12	32,5	30,0	74,2	5,45
5555TR2016	20	16	32,5	30,0	74,2	5,6
5555TR2520	25	20	32,5	32,5	76,8	7,3



5560

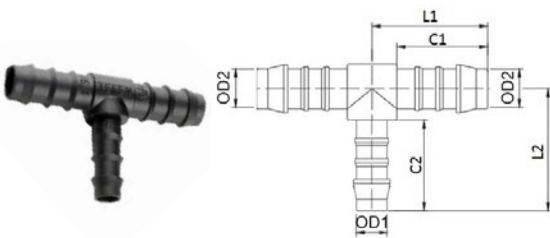
Union tee barb connector



CODE	OD	C1	C2	L1	L2	g
5560TR12	12	30,0	30,0	36,3	38,0	3,0
5560TR16	16	30,0	30,0	38,3	40,0	5,0
5560TR20	20	32,5	32,5	42,4	45,0	9,0
5560TR25	25	32,5	32,5	36,4	47,0	13,0

5565

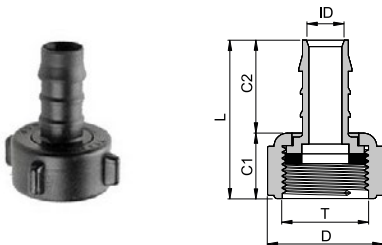
Reduced union tee barb connector



CODE	OD1	OD2	C1	C2	L1	L2	g
5565TR1216	12	16	30,0	30,0	48,2	76,7	3,0
5565TR1620	16	20	30,0	32,5	52,3	84,6	5,0
5565TR2025	20	25	32,5	32,5	58,6	88,7	13,0

5570

Female swivel barb connector BSPP thread with rubber seal



CODE	T	ID	D	C1	C2	L	g
5570TR346	G 3/4"	6	33,5	17,0	21,0	26,7	8,0
5570TR348	G 3/4"	8	33,5	14,5	25,0	30,6	8,5
5570TR18	G 1"	8	39,7	14,5	25,0	30,6	10,0
* 5570TR3810	G 3/8"	10	17,0	16,5	28,0	32,8	7,5
5570TR3410	G 3/4"	10	33,5	16,5	27,0	32,8	9,0
* 5570TR1212	G 1/2"	12	22,0	16,5	28,0	33,7	10,0
5570TR3412	G 3/4"	12	33,5	16,5	28,0	33,7	9,0
5570TR112	G 1"	12	39,7	16,5	27,0	33,7	11,0
5570TR3414	G 3/4"	14	33,5	16,5	30,0	35,0	7,0
5570TR114	G 1"	14	39,7	16,5	30,0	35,0	8,5
5570TR3416	G 3/4"	16	33,5	16,5	30,0	35,7	8,0
5570TR116	G 1"	16	39,7	16,5	30,0	35,7	10,0
5570TR3419	G 3/4"	19	33,5	16,5	31,0	36,8	10,0
5570TR119	G 1"	19	39,7	16,5	31,0	36,8	13,0

* "D" refers to the external wrench

5580

Flat rubber seal for female thread



CODE	T	ØD	S	g
5580TR38	G 3/8"	15,3	2,9	0,6
5580TR12	G 1/2"	18,3	2,5	0,8
5580TR34	G 3/4"	24,7	2,7	0,9
5580TR1	G 1"	31,3	3	1,2

