

-20°C ÷ 80°C



Working pressure:  
from 0,5 to 10 Bar



Compressed air



- Parallel gas BSPP ISO 228  
from G1/8" to G1"  
- Metric ISO 262  
M5  
- NPT  
from N1/8" to N1/2"

Body: Nickel-plated brass

UNI EN 12165 CW617N



Membrane:

- NBR for M5 thread

- Polyurethane elastomer for all other  
sizes

Seal: Nylon

#### AVAILABILITY

Available on request with Viton membrane  
from metric thread M5 to 1/2" BSPP thread

**SILICONE FREE**

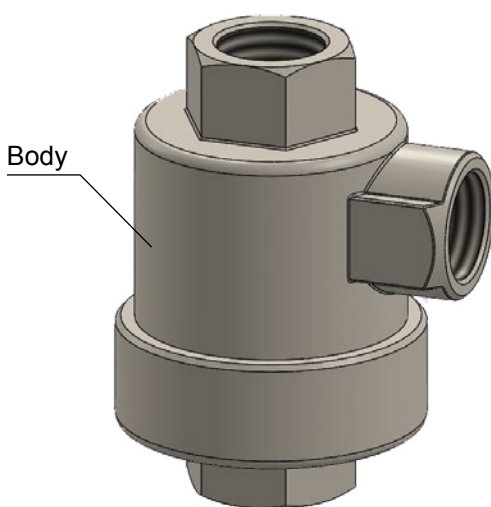


Products in compliance with  
EC Regulation 1907/2006

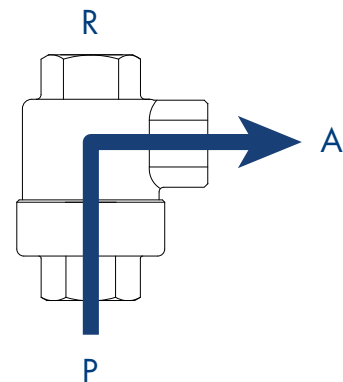
**RoHS3**

Products in compliance with  
the directive EU 2015/863

#### CONSTRUCTION DETAILS



#### FLOW EXHAUST



This valve allows the air to be quickly  
expelled and consequently speeds up the  
working time.

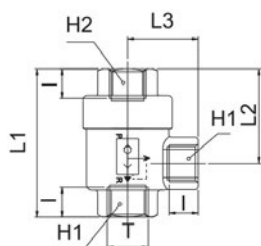
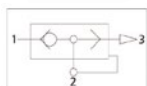
The air entering "P" displaces the  
membrane closing the outlet "R" and exits  
from outlet "A".

As soon as we remove the pressure coming  
from "P", the air at outlet "A" closes the  
outlet "P" due to the pressure difference,  
exiting quickly from exhaust outlet "R"  
where it is recommended to mount a  
silencer.



**1100**

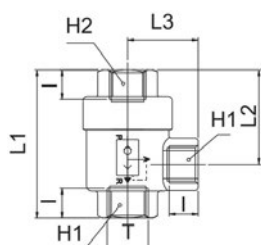
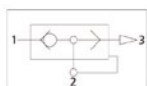
Quick exhaust valve, BSPP &amp; metric thread



CODE	T	I	L1	L2	L3	H1	H2	g
1100TRM5	M5x0,8	4,5	24,8	15,6	10,5	10	10	27
1100TR18	G 1/8"	8,0	42,0	28,0	19,5	14	14	84
1100TR14	G 1/4"	11,0	53,0	34,5	25,0	19	19	146
1100TR38	G 3/8"	12,0	55,0	36,0	26,0	21	21	150
1100TR12	G 1/2"	14,0	71,0	44,0	35,0	26	26	314
1100TR34	G 3/4"	18,0	86,0	52,0	38,5	32	32	450
1100TR1	G 1"	19,0	94,0	56,0	42,0	38	38	525

**1100-N**

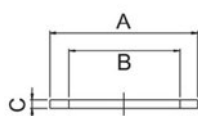
Quick exhaust valve, NPT thread



CODE	T	I	L1	L2	L3	H1	H2	g
1100TRN18	N 1/8"	8,0	42,0	28,0	19,5	14	14	84
1100TRN14	N 1/4"	11,0	53,0	34,5	25,0	19	19	146
1100TRN38	N 3/8"	12,0	55,0	36,0	26,0	21	21	150
1100TRN12	N 1/2"	14,0	71,0	44,0	35,0	26	26	314

**1101**

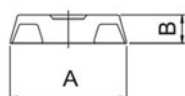
Nylon body seal



CODE	FOR VALVE	A	B	C	g
1101TRM5	M5x0,8	17,0	12,4	0,8	0,080
1101TR18	1/8"	23,8	20,0	1,0	0,014
1101TR14	1/4"	28,5	24,0	1,0	0,018
1101TR38	3/8"	28,5	24,0	1,0	0,018
1101TR12	1/2"	38,6	32,0	1,5	0,030
1101TR34	3/4"	45,0	38,0	1,5	0,760
1101TR1	1"	45,0	38,0	1,5	0,760

**1102**

Membrane for valve in polyurethane elastomer



CODE	FOR VALVE	A	B	g
* 1102TRM5	M5x0,8	13,5	4,5	0,4
1102TR18	1/8"	20,5	5,0	1,1
1102TR14	1/4"	25,5	5,8	1,9
1102TR38	3/8"	25,5	5,8	1,9
1102TR12	1/2"	35,5	8,2	2,5
1102TR34	3/4"	40,5	9,0	7,0
1102TR1	1"	40,5	9,0	7,0

\* Membrane in NBR

