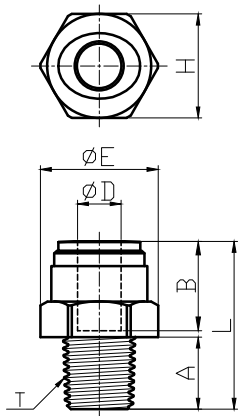


HPC



MODEL (mm)	φD	T(BSPT, R)	A	B (TUBE DEEP)	φE	H(HEX)	L	WEIGHT (g)	EA (BOX)
HPC 04R01	04	1/8	9.1	14.7	18.5	17.0	26.0	4.1	100
HPC 06R01	06	1/8	9.1	16.1	18.5	17.0	26.2	3.9	100
HPC 06R02	06	1/4	13.1	16.1	18.5	17.0	26.7	4.2	100
HPC 06R03	06	3/8	13.5	16.1	21.0	19.0	26.6	5.9	50
HPC 08R01	08	1/8	9.1	17.5	21.0	19.0	28.1	5.2	100
HPC 08R02	08	1/4	13.1	17.5	21.0	19.0	30.6	5.8	50
HPC 08R03	08	3/8	13.5	17.5	21.0	19.0	27.0	5.7	50
HPC 10R02	10	1/4	13.1	20.1	21.0	19.0	36.0	7.7	50
HPC 10R03	10	3/8	13.5	20.1	23.2	21.0	28.8	6.7	50
HPC 10R04	10	1/2	16.3	20.1	24.4	22.0	32.1	9.6	50
HPC 12R03	12	3/8	13.5	24.7	26.5	24.0	32.2	8.9	50
HPC 12R04	12	1/2	16.3	24.7	26.5	24.0	34.3	11.0	50