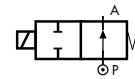


2/2 WAY DIRECT ACTING SOLENOID VALVE, G 1/4"

COMMON FEATURES

Body material: brass (CW617N EN 12165)
 Orifice material: stainless steel (1.4305 EN 10088/AISI 303)
 Operator material: stainless steel
 Protection class: IP 65 (with connector and gasket)

TYPE: RD236

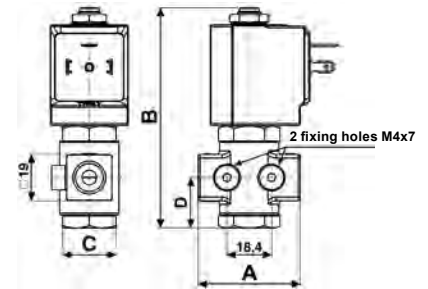


Normally Open



DIMENSIONS & WEIGHTS		RD236
G connection	[ISO 228]	1/4"
A	[mm]	47 *
B	[mm]	91
C	[mm]	HEX 22
D	[mm]	20.75
weight	[kg]	0.25

* Since July 2014



Flow direction overseat 1 → 2

VALVE	nominal Ø	flow rate Kvs	OPD			COILS	
			min.	max. AC	max. DC	code	[Volts/Hz]
code	[mm]	[l/min]	[barg]	[barg]	[barg]	code	[Volts/Hz]
RD236DVA	1.0	0.5	0	25	25	7250	24v DC
RD236DVC	1.5	1.3	0	20	20	7200	24v 50/60Hz
RD236DVE	2.0	2.0	0	18	18	7400	110v 50Hz - 120v 60Hz
RD236DVG	2.5	2.8	0	15	15	7600	200v 50Hz - 220v 60Hz
RD236DVH	3.0	3.5	0	12	12	7700	230v 50Hz - 240v 60Hz
RD236DVM	4.5	5.5	0	5	5		
RD236DVP	6.0	7.5	0	2	2		

RD236 - FKM seal, NO -

Media: water, oil, air
 Media temperature: -10°C ÷ +130°C
 Ambient temperature: -10°C ÷ +50°C
 Seal material: foodgrade FKM
 Coil power: AC 18va (holding)
 AC 36va (inrush)
 DC 14w

VALVE	nominal Ø	flow rate Kvs	OPD			COILS class 'H' only	
			min.	max. AC	max. DC	code	[Volts/Hz]
code	[mm]	[l/min]	[barg]	[barg]	[barg]	code	[Volts/Hz]
RD236DLA	1.0	0.5	0	9	9	7251	24v DC
RD236DLC	1.5	1.3	0	9	9	7201	24v 50/60Hz
RD236DLE	2.0	2.0	0	9	9	7401	110v 50Hz - 120v 60Hz
RD236DLH	3.0	3.5	0	9	9	7601	200v 50Hz - 220v 60Hz
						7701	230v 50Hz - 240v 60Hz

RD236 - FILLED PTFE seal, NO -

Media: steam
 Media temperature: -10°C ÷ +180°C
 Ambient temperature: -10°C ÷ +70°C
 Seal material: Sigodur (filled PTFE)
 Coil power: AC 18va (holding)
 AC 36va (inrush)
 DC 14w

NOTES

Seamless tube as standard

VALVE	nominal Ø	flow rate Kvs	OPD			COILS high power - class 'H' only	
			min.	max. AC	max. DC	code	[Volts/Hz]
code	[mm]	[l/min]	[barg]	[barg]	[barg]	code	[Volts/Hz]
RD236DRA1	1.0	0.5	0	180	180	72Z1	24v DC
RD236DRC1	1.5	1.3	0	150	150	72K1	24v 50/60Hz
RD236DRE1	2.0	2.0	0	60	60	74K1	110v 50Hz - 120v 60Hz
RD236DRG1	2.5	2.8	0	37	37	77K1	230v 50Hz - 240v 60Hz
RD236DRH1	3.0	3.5	0	28	28		

RD236 - RUBY seal, NO -

Media[Ⓢ]: water, oil, liquids
 Media temperature: -10°C ÷ +130°C
 Ambient temperature: -10°C ÷ +50°C
 Seal material: Ruby
 Coil power: AC 25va (holding)
 AC 50va (inrush)
 DC 22w

NOTES

Seamless tube as standard

Ⓢ Not 100% leak-proof when used with air/gases. Approximate leak rate is 1,5 ml/min at max. OPD.

GENERAL PURPOSE

STEAM

HIGH PRESSURE